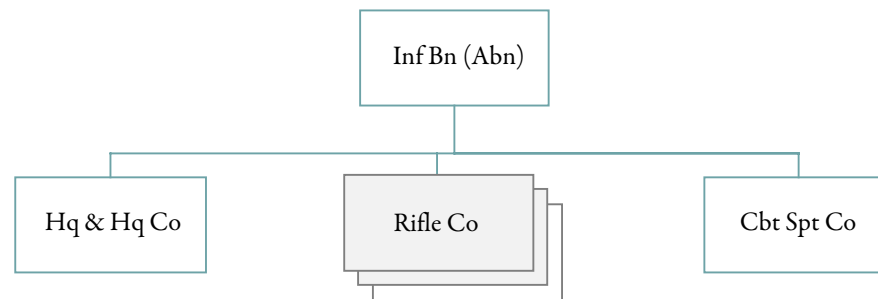


**INFANTRY BATTALION (AIRBORNE), AIRBORNE DIVISION**

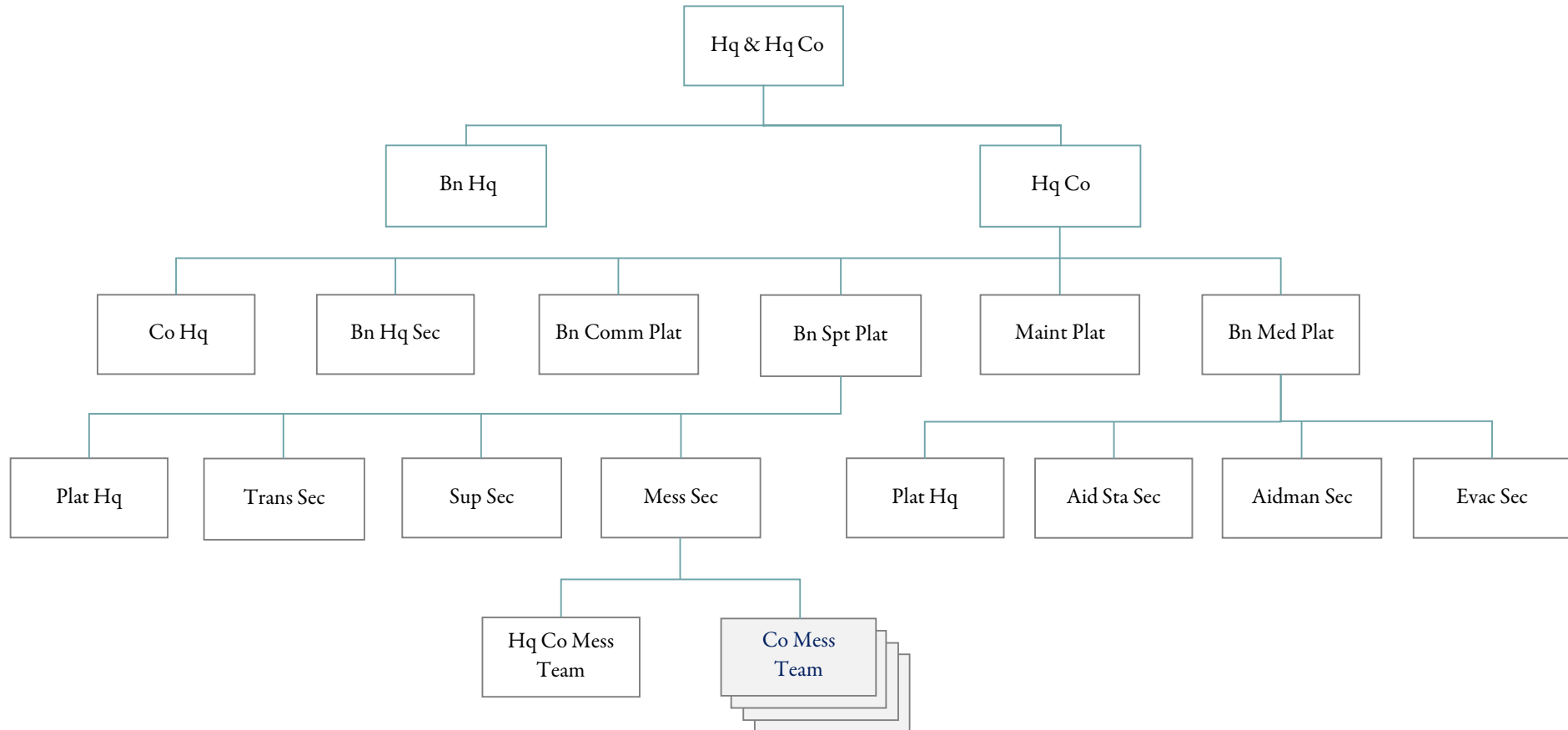
Designation: \_\_\_\_ Battalion (Airborne), \_\_\_\_ Infantry



**PERSONNEL ALLOWANCES**

PARA	DESCRIPTION	GRADE	STRENGTH	REMARKS		
				1	2	3
01	HQ & HQ CO					
	OFFICERS		15			
	WARRANT OFFICERS		1			
	ENLISTED		138			
	PARA TOTAL		154			
02	3 RIFLE COMPANIES					
	OFFICERS		18			
	WARRANT OFFICERS					
	ENLISTED		495			
	PARA TOTAL		513			
03	CMBT SUPPORT CO					
	OFFICERS		6			
	WARRANT OFFICERS					
	ENLISTED		113			
	PARA TOTAL		119			
	SRC TOTAL		786			

**HEADQUARTERS AND HEADQUARTERS COMPANY  
INFANTRY BATTALION (AIRBORNE), AIRBORNE DIVISION**  
Designation: Headquarters, \_\_\_\_ Battalion (Airborne) \_\_\_\_ Infantry  
Headquarters Company \_\_\_\_ Battalion (Airborne) \_\_\_\_ Infantry



**PERSONNEL ALLOWANCES**

PARA	DESCRIPTION	GRADE	STRENGTH	REMARKS		
				1	2	3
01	BATTALION HQ					
	BATTALION COMMANDER	LTC	1	11		
	EXECUTIVE OFFICER	MAJ	1	11		
	S3	MAJ	1	11		
	COMMUNICATION OFFICER	CPT	1	36		
	MOTOR OFFICER	CPT	1			
	S1	CPT	1	31		
	S2	CPT	1			
	S4	CPT	1			
	COMD SERGEANT MAJOR	E-9	1			
	PARA TOTAL		9			
02	COMPANY HEADQUARTERS					
	COMPANY COMMANDER	CPT	1	11		
	EXECUTIVE OFFICER	LT	1			
	FIRST SERGEANT	E-8	1			
	SUPPLY SERGEANT	E-6	1			
	COMPANY CLERK	E-5	1			
	ARMORER	E-4	1			
	LT VEHICLE DRIVER	E-3	1	55		
	SUPPLY CLERK	E-3	1			
		PARA TOTAL		8		
03	BATTALION HQ SECTION					
	S3 AIR	CPT	1			
	LIAISON OFFICER	LT	2			
	INTELLIGENCE SGT	E-8	1			
	OPERATIONS SGT	E-8	1			
	A OPERATIONS SGT	E-7	1	08		
	PER STAFF NCO	E-7	1	07		
	LEGAL CLERK	E-6	1			
	CLERK TYPIST	E-4	2			
	OPERATIONS ASST	E-4	1			
	LT VEHICLE DRIVER	E-3	8	55		
	PARA TOTAL		19			
04	BN COMM PLATONN					
	COMMUNICATION CHIEF	E-7	1			
	RATT TEAM CHIEF	E-5	1			
	WIRE TEAM CHIEF	E-5	1			
	FIELD RADIO MECHANIC	E-4	1			
	RATT OPERATOR	E-4	2			
	SR FLD SWITCHBOARD OPERATOR	E-4	1			
	SR FIELD WIREMAN	E-4	2			
	SR MESSAGE CLERK	E-4	1			
	FIELD SWITCHBOARD OP	E-3	2			
	FIELD WIREMAN	E-3	4			
	MESSAGE CLERK	E-3	3	45		
	MOTOR MESSENGER	E-3	2	01		

PARA	DESCRIPTION	GRADE	STRENGTH	REMARKS		
				1	2	3
	RADIO TELEPHONE OP	E-3	4	01		
	PARA TOTAL		25			
05	BN SUPPORT PLATOON HQ					
	PLATOON LEADER	LT	1	25		
	RADIOE TELEPHONE OP	E-3	1	01		
	PARA TOTAL		2			
06	TRANSPORTATION SEC					
	SECTION SERGEANT	E-6	1			
	AMMUNITION CHIEF	E-6	1			
	AMMUNITION SP	E-4	1	01		
	SR LT VEHICLE DVR	E-4	1			
	LT VEHICLE DVR	E-3	7			
	PARA TOTAL		11			
07	SUPPLY SECTION					
	SUPPLY SERGEANT	E-7	1			
	SUPPLY SP	E-5	1			
	SUPPLY SP	E-4	1			
	SUPPLY CLERK	E-3	2			
	PARA TOTAL		5	44		
08	HQ CO MESS TEAM					
	BN MESS STEWARD	E-7	1			
	FIRST COOK	E-6	1			
	FIRST COOK	E-5	2			
	COOK	E-4	1	01		
	PARA TOTAL		5			
09	4 COMPANY MESS TEAMS					
	MESS STEWARD	E-7	4			
	FIRST COOK	E-6	4			
	FIRST COOK	E-5	8			
	COOK	E-4	7	48		
	PARA TOTAL		23			
10	MAINTENANCE PLATOON					
	AUTOMOTIVE MAINT TECH	WO	1			
	MOTOR SERGEANT	E-7	1			
	SR WHEEL VEH MECHANIC	E-5	1			
	EQUIP RECORDS CLERK	E-4	1			
	PLL CLERK	E-4	1	01		
	POWER GEN OP/MECH	E-4	1	01		
	WELDER	E-4	1	01		
	WHEEL VEH MECHANIC	E-4	4	44		
	WHEEL VEH MECH HELPER	E-3	1	01		
	PARA TOTAL		12			
11	BN MEDICAL PLATOON HQ					
	FIELD MEDICAL ASST	LT	1	11	41	
	PLATOON SERGEANT	E-7	1			
	MEDICAL RECORDS SP	E-4	1	01		
	PARA TOTAL		3			
12	AID STATION SECTION					

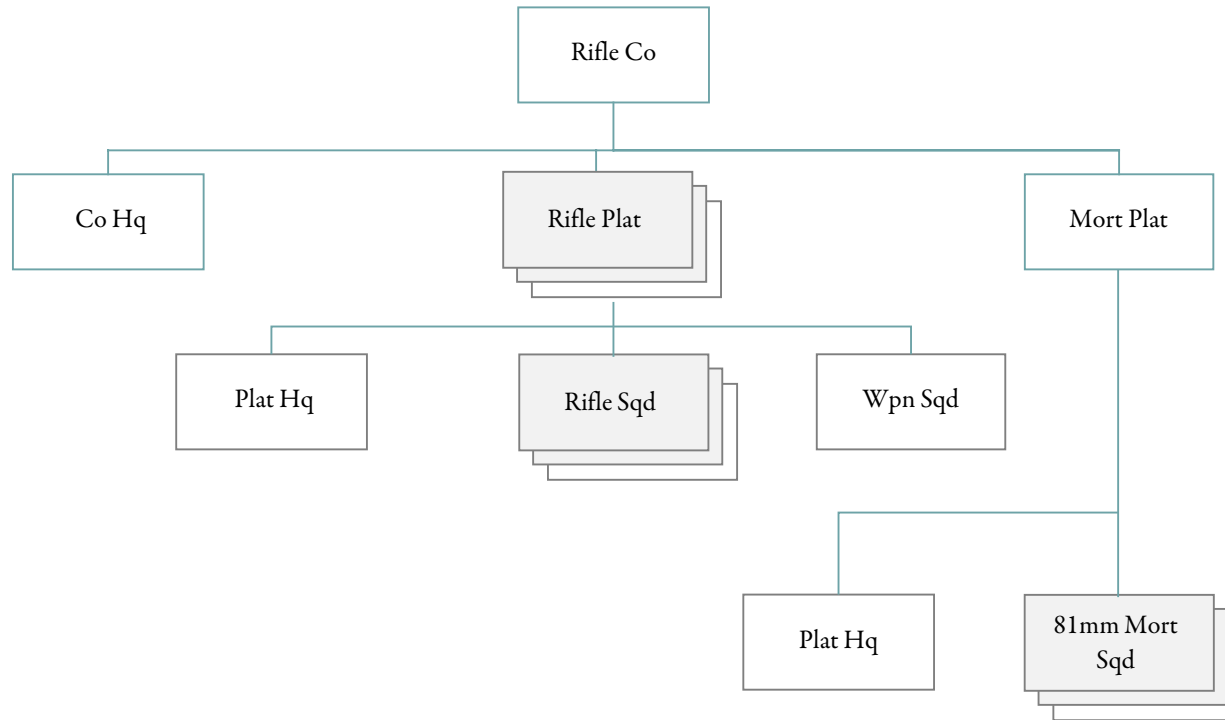
PARA	DESCRIPTION	GRADE	STRENGTH	REMARKS		
				1	2	3
	SENIOR CLINICAL SP	E-6	1			
	CLINICAL SPECIALIST	E-5	1			
	SR MEDICAL AIDMAN	E-5	2			
	MEDICAL AIDMAN	E-4	2	44		
	PARA TOTAL		6			
13	AIDMAN SECTION					
	COMPANY AIDMAN	E-5	15	11		
	PARA TOTAL		15			
14	EVACUATION SECTION					
	SECTION SERGEANT	E-5	1			
	AMBULANCE DRIVER	E-4	5			
	MEDICAL AIDMAN	E-4	5			
	PARA TOTAL		11			
	SRC TOTAL		154			
	REMARKS					
01	ALSO LIGHT VEHICLE DRIVER					
07	ALSO INFORMATION NCO					
08	ALSO EDUCATION NCO					
11	ARMED WITH PISTOL AUTOMATIC CAL .45					
25	ALSO ASSISTANT S4					
31	ALSO INFORMATION OFFICER					
36	ALSO COMMANDS COMMUNICATION PLATOON					
39	ONE OFFICER TO BE NUCLEAR WEAPONS PREFIX 5 QUALIFIED					
41	ALSO BATTALION STAFF OFFICER					
44	REMARK 01 APPLIES TO 1 EM					
45	REMARK 01 APPLIES TO 2 EM					
48	REMARK 01 APPLIES TO 4 EM					
55	ALSO RADIO TELEPHONE OPERATOR					

EQUIPMENT ALLOWANCE		
PARA	DESCRIPTION	LEVEL
01	BATTALION HQ	
	BAYONET-KNIFE W/SCABBARD FOR M16A1 RIFLE	9
	PISTOL CALIBER .45 AUTOMATIC	3
	RIFLE 5.56 MILLIMETER	6
02	COMPANY HEADQUARTERS	
	BAYONET-KNIFE W/SCABBARD FOR M16A1 RIFLE	8
	MACHINE GUN CALIBER .50 HB FLEXIBLE FOR GROUND USE	3
	MOUNT TRIPOD MACHINE GUN HEAVY CALIBER 50	3
	PISTOL CALIBER .45 AUTOMATIC	1
	RADIO SET AN/VRC-46 MOUNTED IN TRUCK ¾ TON CARGO	1
	RIFLE 5.56 MILLIMETER	7
	TRAILER CARGO ¾ TON 2 WHEEL	1
	TRUCK CARGO ¾ TON 4 X 4	1
03	BATTALION HQ SECTION	
	BAYONET-KNIFE W/SCABBARD FOR M16A1 RIFLE	19
	LAUNCHER GRENADE M203 FOR ZM16E1 RIFLE	4
	RADIO SET AM/GRC-160 MTD IN TRUCK UTILITY ¼ TON	1
	RADIO SET AN/PRC-77	3
	RADIO SET AN/VRC-46 MOUNTED IN TRUCK ¼ TON	8
	RADIO SET AN/VRC-47 MOUNTED IN TRUCK ¼ TON	2
	RIFLE 5.56 MILLIMETER	19
	TRAILER CARGO ¼ TON 2 WHEEL	7
	TRUCK UTILITY ¼ TON 4 X 4	8
04	BN COMM PLATOON	
	BAYONET-KNIFE W/SCABBARD FOR M16A1 RIFLE	25
	LAUNCHER GRENADE M203 FOR XM16E1 RIFLE	1
	RADIO SET AN/VRC-46 MOUNTED IN TRUCK ¼ TON	1
	RADIO SET AN/VRC-46 MOUNTED IN TRUCK ¾ TON CARGO	2
	RADIO SET AN/VRC-49 MOUNTED IN TRUCK ¼ TON	1
	RADIO SET CONTROL GROUP AN/GRA-39	3
	RADIO TELETYPEWRITER SET AN/VSC-2	1
	RIFLE 5.56 MILLIMETER	25
	SWITCHBOARD TELEPHONE MANUAL SB-22/PT	2
	TELEPHONE SET TA-312/PT	21
	TRAILER CARGO ¼ TON 2 WHEEL	4
	TRAILER CARGO ¾ TON W2 WHEEL	2
	TRUCK CARGO ¾ TON 4 X 4	2
	TRUCK PLATFORM UTILITY ½ TON 4 X 4	2
	TRUCK UTILITY ¼ TON 4 X 4	4
05	BN SUPPORT PLATOON HQ	
	BAYONET-KNIFE W/SCABBARD FOR M16A1 RIFLE	2
	RADIO SET AN/PRC-77	1
	RADIO SET AN/VRC-46 MOUNTED IN TRUCK ¼ TON	1
	RIFLE 5.56 MILLIMETER	2
	TRAILER CARGO ¼ TON 2 WHEEL	1
	TRUCK UTILITY ¼ TON 4 X 4	1
06	TRANSPORTATION SEC	
	BAYONET-KNIFE W/SCABBARD FOR M16A1 RIFLE	11

PARA	DESCRIPTION	LEVEL
	LAUNCHER GRENADE M203 FOR XM16E1 RIFLE	1
	MACHINE GUN CALIBER .50 HB FLEXIBLE FOR GROUND USE	4
	MOUNT TRIPOD MACHINE GUN HEAVY CALIBER 50	4
	RIFLE 5.56 MILLIMETER	11
	TRAILER CARGO ¾ TON 2 WHEEL	4
	TRUCK CARGO ¾ TON 4 X 4	4
	TRUCK CARGO 2½ TON 6 X 6	3
	TRUCK CARGO 2½ TON 6 X 6 W/WINCH	2
07	SUPPLY SECTION	
	BAYONET-KNIFE W/SCABBARD FOR M16A1 RIFLE	5
	FLAME THROWER PORTABLE	6
	MACHINE GUN 7.62 MILLIMETER LIGHT FLEXIBLE	1
	MOUNT TRIPOD MACHINE GUN 7.62 MILLIMETER	1
	RIFLE 5.56 MILLIMETER	5
	TRAILER CARGO ¾ TON 2 WHEEL	1
	TRUCK CARGO ¾ TON 4 X 4	1
08	HQ CO MESS TEAM	
	BAYONET-KNIFE W/SCABBARD FOR M16A1 RIFLE	5
	RIFLE 5.56 MILLIMETER	5
	TRAILER CARGO 1½ TON 2 WHEEL	1
	TRUCK CARGO 2½ TON 6 X 6	1
09	4 COMPANY MESS TEAMS	
	BAYONET-KNIFE W/SCABBARD FOR M16A1 RIFLE	23
	RIFLE 5.56 MILLIMETER	23
	TRAILER CARGO 1½ TON 2 WHEEL	4
	TRUCK CARGO 2½ TON 6 X 6	4
10	MAINTENANCE PLATOON	
	BAYONET-KNIFE W/SCABBARD FOR M16A1 RIFLE	12
	MACHINE GUN 7.62 MILLIMETER LIGHT FLEXIBLE	1
	MOUNT TRIPOD MACHINE GUN 7.62 MILLIMETER	1
	RADIO SET AN/VRC-46 MOUNTED IN TRUCK ¼ TON	1
	RIFLE 5.56 MILLIMETER	12
	TRAILER CARGO ¾ TON 2 WHEEL	2
	TRUCK CARGO ¾ TON 4 X 4	2
	TRUCK PLATFORM UTILITY ½ TON 4 X 4	2
	TRUCK UTILITY ¼ TON 4 X 4	1
11	BN MEDICAL PLATOON HQ	
	PISTOL CALIBER .45 AUTOMATIC	1
	RADIO SET AN/VRC-64 MOUNTED IN TRUCK UTILITY ¼ TON	1
	RIFLE 5.56 MILLIMETER	2
	TRAILER CARGO ¼ TON 2 WHEEL	1
	TRUCK UTILITY ¼ TON	1
12	AID STATION SECTION	
	RIFLE 5.56 MILLIMETER	6
	TRAILER CARGO ¾ TON 2 WHEEL	1
	TRUCK CARGO ¾ TON 4 X 4	1
13	EVACUATION SECTION	
	RIFLE 5.56 MILLIMETER	11
	TRUCK AMBULANCE ¼ TON 4 X 4	5

**RIFLE COMPANY, INFANTRY BATTALION (AIRBORNE) AIRBORNE DIVISION**

Designation: Company \_\_\_\_, \_\_\_\_ Battalion (Airborne) \_\_\_\_ Infantry



**PERSONNEL ALLOWANCES**

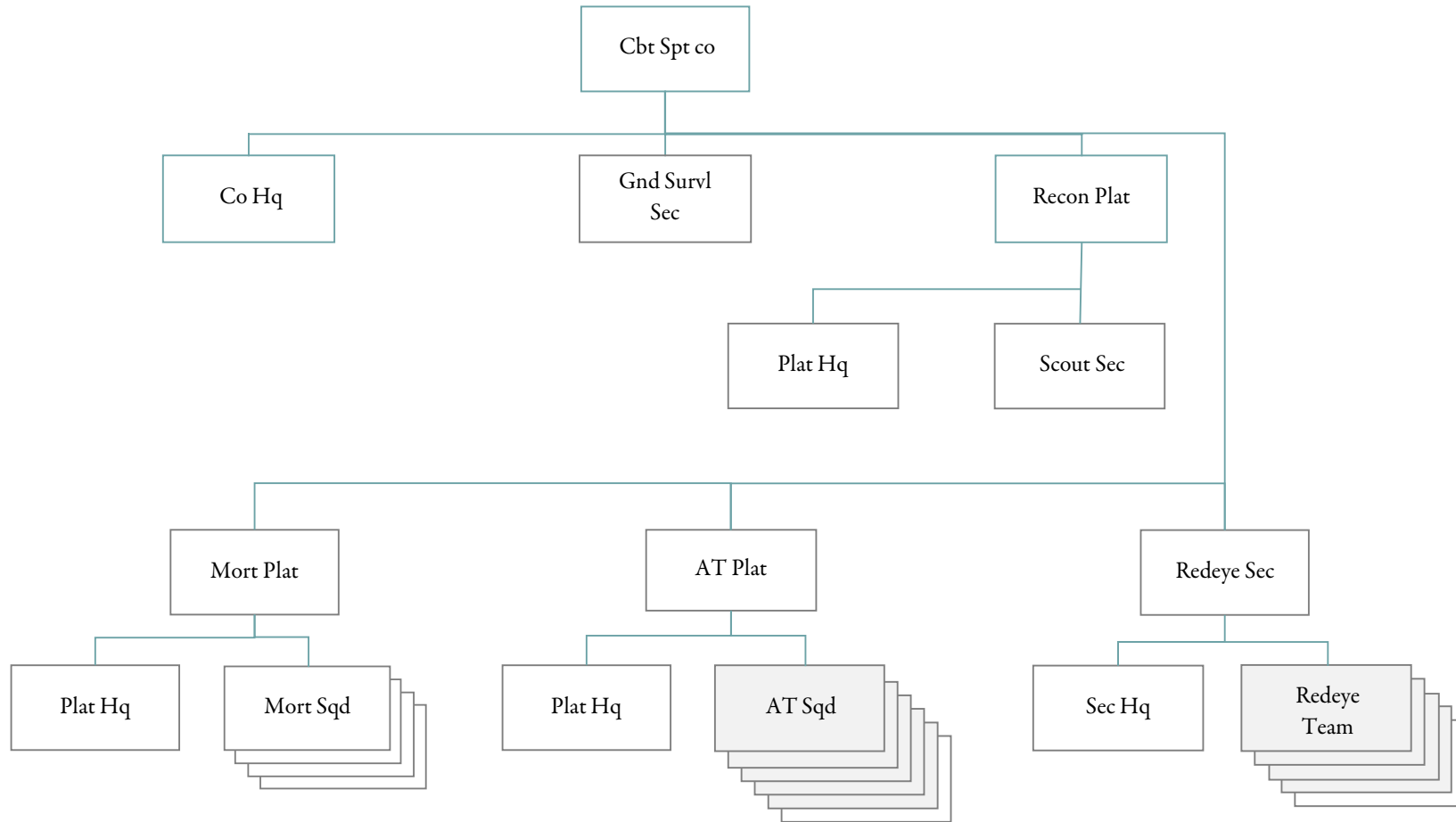
PARA	DESCRIPTION	GRADE	STRENGTH	REMARKS		
				1	2	3
01	COMPANY HEADQUARTERS					
	COMPANY COMMANDER	CPT	1	11		
	EXECUTIVE OFFICER	LT	1			
	FIRST SERGEANT	E-8	1			
	SUPPLY SERGEANT	E-6	1			
	COMMUNICATIONS CHIEF	E-5	1			
	COMPANY CLERK	E-5	1			
	ARMORER	E-4	1	01		
	FIELD RADIO MECHANIC	E-4	1			
	FIELD WIREMAN	E-3	2	04		
	RADIO TELEPHONE OP	E-3	2	01		
	SUPPLY CLERK	E-3	1			
	PARA TOTAL		13			
02	3 RIFLE PLATOON HQ					
	PLATOON LEADER	LT	3			
	PLATOON SERGEANT	E-7	3			
	RADIO TELEPHONE OP	E-3	3			
	PARA TOTAL		9			
03	9 RIFLE SQUADS					
	SQUAD LEADER	E-6	9			
	TEAM LEADER	E-5	18			
	AUTO RIFLEMAN	E-4	18			
	GRENADIER	E-4	18			
	RIFLEMAN	E-3	27			
	PARA TOTAL		90			
04	3 WEAPONS SQUADS					
	SQUAD LEADER	E-6	3			
	GUNNER	E-4	6	11	14	
	MACHINE GUNNER	E-4	6	11		
	AMMUNITION BEARER	E-3	6			
	ASSISTANT GUNNER	E-3	6	11	14	
	ASST MACH GUNNER	E-3	6	11		
	PARA TOTAL		33			
05	MORTAR PLATOON HQ					
	PLATOON LEADER	LT	1			
	PLATOON SERGEANT	E-7	1			
	FORWARD OBSERVER	E-5	3	44		
	FIRE DIR COMPUTER	E-5	2			
	RADIO TELEPHONE OP	E-3	4	47		
06	3 81MM MORTAR SQUADS					
	SQUAD LEADER	E-5	3			
	GUNNER	E-4	3	11		
	AMMUNITION BEARER	E-3	6	41		
	ASSISTANT GUNNER	E-3	3	11		
	PARA TOTAL		15			
	SRC TOTAL		171			

PARA	DESCRIPTION	GRADE	STRENGTH	REMARKS		
				1	2	3
	REMARKS					
01	ALSO LIGHT VEHICLE DRIVER					
04	ALSO SWITCHBOARD OPERATOR					
11	ARMED WITH PISTOL AUTOMATIC CAL .45					
13	ARMED WITH RIFLE 5.56 MM W/BIPOD					
14	EQUIPPED WITH 90MM RR UNTIL DRAGON IS AVAILABLE					
41	1 EM PER SQUAD ALSO LIGHT VEHICLE DRIVER					
42	MINIMUM OF ONE NCO PER PLATOON TO BE RANGER QUALIFIED					
44	ALSO RADIO TELEPHONE OPERATOR					
47	ONE EM ALSO LIGHT VEHICLE DRIVER					

**EQUIPMENT ALLOWANCE**

PARA	DESCRIPTION	LEVEL
01	COMPANY HEADQUARTERS	
	BAYONET-KNIFE W/SCABBARD FOR M16A1 RIFLE	13
	DEMOLITION SET EXPLOSIVE INITIATING ELECTRIC AND SEMI ELECTRIC	1
	LAUNCHER GRENADE M203 FOR XM16E1 RIFLE	1
	NIGHT VISION SIGHT TRIPOD MOUNTED AN/TVS-4	1
	PISTOL CALIBER .45 AUTOMATIC	1
	RADIO SET AN/PRC-77	2
	RADIO SET AN/VRC-47 MOUNTED IN TRUCK ¼ TON	2
	RADIO SET CONROL GROUP AN/GRA-39	2
	RIFLE 5.56 MILLIMETER	12
	SWITCHBOARD TELEPHONE MANUAL SB-22/PT	1
	TELEPHONE SET TA-1/PT	6
	TRAILER CARGO ¼ TON 2 WHEEL	2
	TRUCK PLATFORM UTILITY ½ TON 4 X 4	1
	TRUCK UTILITY ¼ TON 4 X 4	2
02	3 RIFLE PLATOON HQ	
	BAYONET-KNIFE W/SCABBARD FOR M16A1 RIFLE	9
	RADIO SET AN/PRC-77	3
	RIFLE 5.56 MILLIMETER	9
03	9 RIFLE SQUADS	
	BAYONET-KNIFE W/SCABBARD FOR M16A1 RIFLE	90
	LAUNCHER GRENADE M203 FOR XM16E1 RIFLE	18
	NIGHT VISION SIGHT INDIVIDUAL SERVED WEAPON AN/PVS-2	18
	RIFLE 5.56 MILLIMETER	90
	TRANSMITTER SET RADIO AN/PRT-4	9
	BIPOD RIFLE 5.56 MILLIMETER W/CARRYING CASE F/M16A1 RIFLE	18
04	3 WEAPONS SQUADS	
	BAYONET-KNIFE W/SCABBARD FOR M16A1 RIFLE	33
	MACHINE GUN 7.62 MILLIMETER LIGHT FLEXIBLE	6
	MOUNT TRIPOD MACHINE GUN 7.62 MILLIMETER	6
	PISTOL CALIBER .45 AUTOMATIC	24
	RIFLE 5.56 MILLIMETER	9
	RIFLE RECOILLESS 90 MILLIMETER	6
05	MORTAR PLATOON HQ	
	BAYONET-KNIFE W/SCABBARD FOR M16A1 RIFLE	11
	LAUNCHER GRENADE M203 FOR ZM16E1 RIFLE	1
	NIGHT VISION SIGHT TRIPOD MOUNTED AN/TVS-4	1
	RADIO SET AN/PRC-77	6
	RIFLE 5.56 MILLIMETER	11
	SWITCHBOARD TELEPHONE MANUAL SB-993/GT	1
	TELEPHONE SET TA-312/PT	2
	TRUCK PLATFORM UTILITY ½ TON 4 X 4	1
06	3 81MM MORTAR SQUADS	
	BAYONET-KNIFE W/SCABBARD FOR M16A1 RIFLE	15
	LAUNCHER GRENADE M203 FOR XM16E1 RIFLE	3
	MORTAR 81 MILLIMETER ON MOUNT	3
	PISTOL CALIBER .45 AUTOMATIC	6
	RADIO SET AN/PRC-77	3
	RIFLE 5.56 MILLIMETER	9
	TRUCK PLATFORM UTILITY ½ TON 4 X 4	3

**COMBAT SUPPORT COMPANY**  
**INFANTRY BATTALION (AIRBORNE), AIRBORNE DIVISION**  
Designation: Company \_\_\_\_, (Combat Support) \_\_\_\_ Battalion (Airborne)  
\_\_\_\_ Infantry



**PERSONNEL ALLOWANCES**

PARA	DESCRIPTION	GRADE	STRENGTH	REMARKS		
				1	2	3
01	COMPANY HEADQUARTERS					
	COMPANY COMMANDER	CPT	1	11		
	EXECUTIVE OFFICER	LT	1			
	FIRST SERGEANT	E-8	1			
	MOTOR SERGEANT	E-6	1			
	SUPPLY SERGEANT	E-6	1			
	COMMUNICATION CHIEF	E-5	1			
	COMPANY CLERK	E-5	1			
	ARMORER	E-4	1	01		
	EQUIP RECORDS CLERK	E-4	1			
	FIELD RADIO MECHANIC	E-4	1			
	POWER GEN OP/MECH	E-4	1			
	SR FLD SWBD OP	E-4	1			
	WHEEL VEH MECHANIC	E-4	2			
	LT VEHICLE MECHANIC	E-3	1			
	RADIO TELEPHONE OP	E-3	1			
	WHEEL VEH MECH HELPER	E-3	1			
	PARA TOTAL		17			
02	GROUND SURVL SEC					
	SECTION LEADER	E-6	1	53		
	TEAM LEADER	E-5	1			
	SR GND SURVL RAD CRMN	E-5	2			
	GND SURVL RADAR CRMN	E-4	2	01	55	
	PARA TOTAL		6			
03	RECON PLAT HQ					
	PLATOON LEADER	LT	1			
	PLATOON SERGEANT	E-7	1			
	SCOUT DRIVER	E-4	1	55		
	PARA TOTAL		3			
04	SCOUT SECTION					
	SQUAD LEADER	E-6	2	53		
	ASST SQUAD LEADER	E-5	2			
	SCOUT DRIVER	E-4	4	55		
	SCOUT OBSERVER	E-3	4			
	PARA TOTAL		12			
05	MORTAR PLATOON HQ					
	FIRE DIRECTION CH	E-6	1			
	FORWARD OBSERVER	E-5	3			
	FIRE DIR COMPUTER	E-5	2	46		
	LT VEHICLE DRIVER	E-3	2			
	RADIO TELEPHONE OP	E-3	4	01		
	PARA TOTAL		14			
06	4 MORTAR SQUADS					
	SQUAD LEADER	E-5	4			
	MORTAR GUNNER	E-4	4	11		
	AMMUNITION BEARER	E-3	12	49		

PARA	DESCRIPTION	GRADE	STRENGTH	REMARKS		
				1	2	3
	A MORTAR GUNNER	E-3	4	11		
	PARA TOTAL		24			
07	ANTITANK PLAT HQ					
	PLATOON LEADER	LT	1			
	PLATOON SERGEANT	E-7	1			
	RADIO TELEPHONE OP	E-3	2	01		
	PARA TOTAL	4				
08	6 ANTITANK SQUADS					
	SECTION LEADER	E-6	3	42		
	SQUAD LEADER	E-5	3			
	GUNNER	E-4	6	11		
	AMMUNITION BEARER	E-3	6	01		
	ASSISTANT GUNNER	E-3	6	01	11	
	PARA TOTAL		24			
09	REDEYE SECTION HQ					
	SECTION LEADER	LT	1			
	SECTION SERGEANT	E-6	1	01		
	PARA TOTAL		2			
10	5 REDEYE TEAMS					
	REDEYE TEAM CHIEF	E-5	5	11		
	REDEYE GUNNER	E-4	5	01		
	PARA TOTAL		10			
	SRC TOTAL		116			
	REMARKS					
01	ALSO LIGHT VEHICLE DRIVER					
11	ARMED WITH PISTOL AUTOMATIVE CAL .45					
42	ALSO ACTS AS SQUAD LEADER					
46	1 EM ALSO RADIO TELEPHONE OPERATOR					
49	REMARK 01 APPLIES TO 8 EM					
53	ALSO TEAM LEADER					
55	ALSO RADIO TELEPHONE OPERATOR					

## EQUIPMENT ALLOWANCE

PARA	DESCRIPTION	LEVEL
01	COMPANY HEADQUARTERS	
	BAYONET-KNIFE W/SCABBARD FOR M16A1 RIFLE	17
	LAUNCHER GRENADE M203 FOR XM16E1 RIFLE	1
	PISTOL CALIBER .45 AUTOMATIC	1
	RADIO SET AN/PRC-77	2
	RADIO SET AN/VRC-47 MOUNTED IN TRUCK ¼ TON	2
	RIFLE 5.56 MILLIMETER	16
	SWITCHBOARD TELEPHONE MANUAL SB-22/PT	1
	TELEPHONE SET TA-312/PT	2
	TAILER CARGO ¼ TON 2 WHEEL	2
	TRAILER CARGO ¾ TON 2 WHEEL	1
	TRUCK CARGO ¾ TON 4 X 4	1
	TRUCK UTILITY ¼ TON 4 X 4	2
02	GROUND SURVLE SEC	
	BAYONET-KNIFE W/SCABBARD FOR M16A1 RIFLE	6
	RADAR SET AN/PPS-5	2
	RADIO SET AN/PRC-77	2
	RIFLE 5.56 MILLIMETE	6
	TRUCK PLATFORM UTILITY ½ TON 4 X 4	2
03	RECON PLAT HQ	
	BAYONET-KNIFE W/SCABBARD FOR M16A1 RIFLE	3
	NIGHT VISION SIGHT TRIPOD MOUNTED AN/TVS-4	1
	RADIO SET AN/GRC-160 MOUNTED IN TRUCK UTILITY ¼ TON	1
	RADIO SET AN/VRC-47 MOUNT IN TRUCK ¼ TON	1
	RIFLE 5.56 MILLIMETER	3
	TRAILER CARGO ¼ TON 2 WHEEL	1
	TRUCK UTILITY ¼ TON 4 X 4	1
04	SCOUT SECTION	
	BAYONET-KNIFE W/SCABBARD FOR M16A1 RIFLE	12
	LAUNCHER GRENADE M203 FOR XM16E1	4
	MACHINE GUN 7.62 MILLIMETER LIGHT FLEXIBLE	4
	MOUNT MACHINE GUN PEDESTAL 7.62MM M60 ON TRUCK M151	4
	MOUNT TRIPOD MACHINE GUN 7.62 MILLIMETER	4
	NIGHT VISION SIGHT INDIVIDUAL SERVEP WEAPON AN/PVS-2	4
	RADIO SET AN/GRC-160 MTD IN TRUCK UTILITY ¼ TON	4
	RADIO SET AN/VRC-46 MOUNTED IN TRUCK ¼ TON	1
	RIFLE 5.56 MILLIMETER	12
	TRUCK UTILITY ¼ TON 4 X 4	4
05	MORTAR PLATOON HQ	
	BAYONET-KNIFE W/SCABBARD FOR M16A1 RIFLE	14
	LAUNCHER GRENADE M203 FOR XM16E1 RIFLE	2
	NIGHT VISION SIGHT TRIPOD MOUNTED AN/TVS-4	3
	RADIO SET AN/GRC-160 MOUNTED IN TRUCK UTILITY ¼ TON	1
	RADIO SET AN/PRC-77	3
	RADIO SET AN/VRC-47 MOUNTED IN TRUCK ¼ TON	1
	RADIO SET AN/VRC-47 MOUNTED IN TRUCK ¾ TON CARGO	1
	RADIO SET AN/VRC-64 MOUNTED IN TRUCK UTILITY ¼ TON	3
	RIFLE 5.56 MILLIMETER	14

PARA	DESCRIPTION	LEVEL
	SWITCHBOARD TELEPHONE MANUAL SB-22/PT	1
	SWITCHBOARD TELEPHONE MANUAL SB-993/GT	1
	TELEPHONE SET TA-312/PT	6
	TRAILER CARGO ¼ TON 2 WHEEL	4
	TRAILER CARGO ¾ TON 2 WHEEL	2
	TRUCK CARGO ¾ TON 4 X 4	2
	TRUCK UTILITY ¼ TON 4 X 4	4
06	4 MORTAR SQUADS	
	BAYONET-KNIFE W/SCABBARD FOR M16A1 RIFLE	24
	LAUNCHER GRENADE M203 FOR ZM16E1 RIFLE	4
	MORTAR 4.2 INCH ON MOUNT	4
	PISTOL CALIBER .45 AUTOMATIC	8
	RADIO SET AN/PRC-77	4
	RIFLE 5.56 MILLIMETER	16
	TRUCK PLATFORM UTILITY ½ TON 4 X 4	8
07	ANTITANK PLAT HQ	
	BAYONET-KNIFE W/SCABBARD FOR M16A1 RIFLE	4
	RADIO SET AN/GRC-160 MTD IN TRUCK ¼ TON	1
	RADIO SET AN/PRC-77	1
	RADIO SET AN/VRC-46 MOUNTED IN TRUCK ¼ TON	1
	RIFLE 5.56 MILLIMETER	4
	SWITCHBOARD TELEPHONE MANUAL SB-993/GT	1
	TELEPHONE SET TA-312/PT	1
	TRAILER CARGO ¼ TON 2 WHEEL	1
	TRUCK PLATFORM UTILITY ½ TON 4 X 4	1
	TRUCK UTILITY ¼ TON 4 X 4	1
08	6 ANTITANK SQUADS	
	BAYONET-KNIFE W/SCABBARD FOR M16A1 RIFLE	24
	LAUNCHER TUBULAR GUIDED MISSILE (TOW)	6
	PISTOL CALIBER .45 AUTOMATIC	12
	RADIO SET AN/PRC-77	6
	RIFLE 5.56 MILLIMETER	12
	TRUCK GUIDED MISSILE EQUIPMENT MULE (TOW)	6
	TRUCK PLATFORM UTILITY ½ TON 4 X 4	6
	NIGHT SIGHT TOW MISSILE SYSTEM	6
09	REDEYE SECTION HQ	
	BAYONET-KNIFE W/SCABBARD FOR M16A1 RIFLE	2
	RADIO SET AN/VRC-47 MOUNTED IN TRUCK ¼ TON	1
	RADIO SET CONTROL GROUP AN/GRA-39	1
	RIFLE 5.56 MILLIMETER	2
	TRAILER CARGO ¼ TON 2 WHEEL	1
	TRUCK UTILITY ¼ TON 4 X 4	1
10	5 REDEYE TEAMS	
	BAYONET-KNIFE W/SCABBARD FOR M16A1 RIFLE	10
	PISTOL CALIBER .45 AUTOMATIC	5
	RADIO SET AN/GRC-160 MTD IN TRUCK CARGO ¾ TON	5
	RIFLE 5.56 MILLIMETER	5
	TRUCK CARGO ¾ TON 4 X 4	5
	MOUNTING KIT VEHICLE GUIDED MISSILE SYSTE (REDEYE)	5