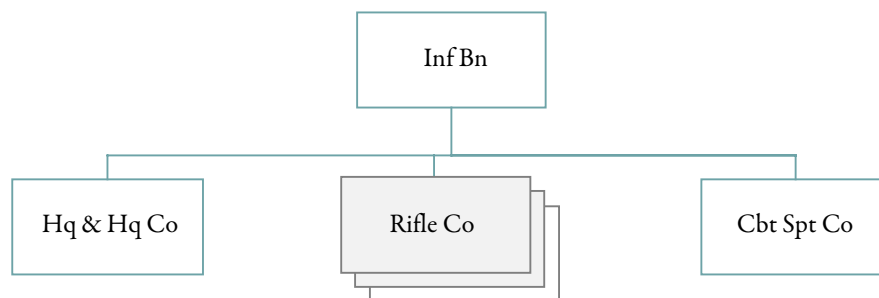


**INFANTRY BATTALION, AIRMOBILE DIVISION**

Designation: \_\_\_\_ Battalion, \_\_\_\_ Infantry

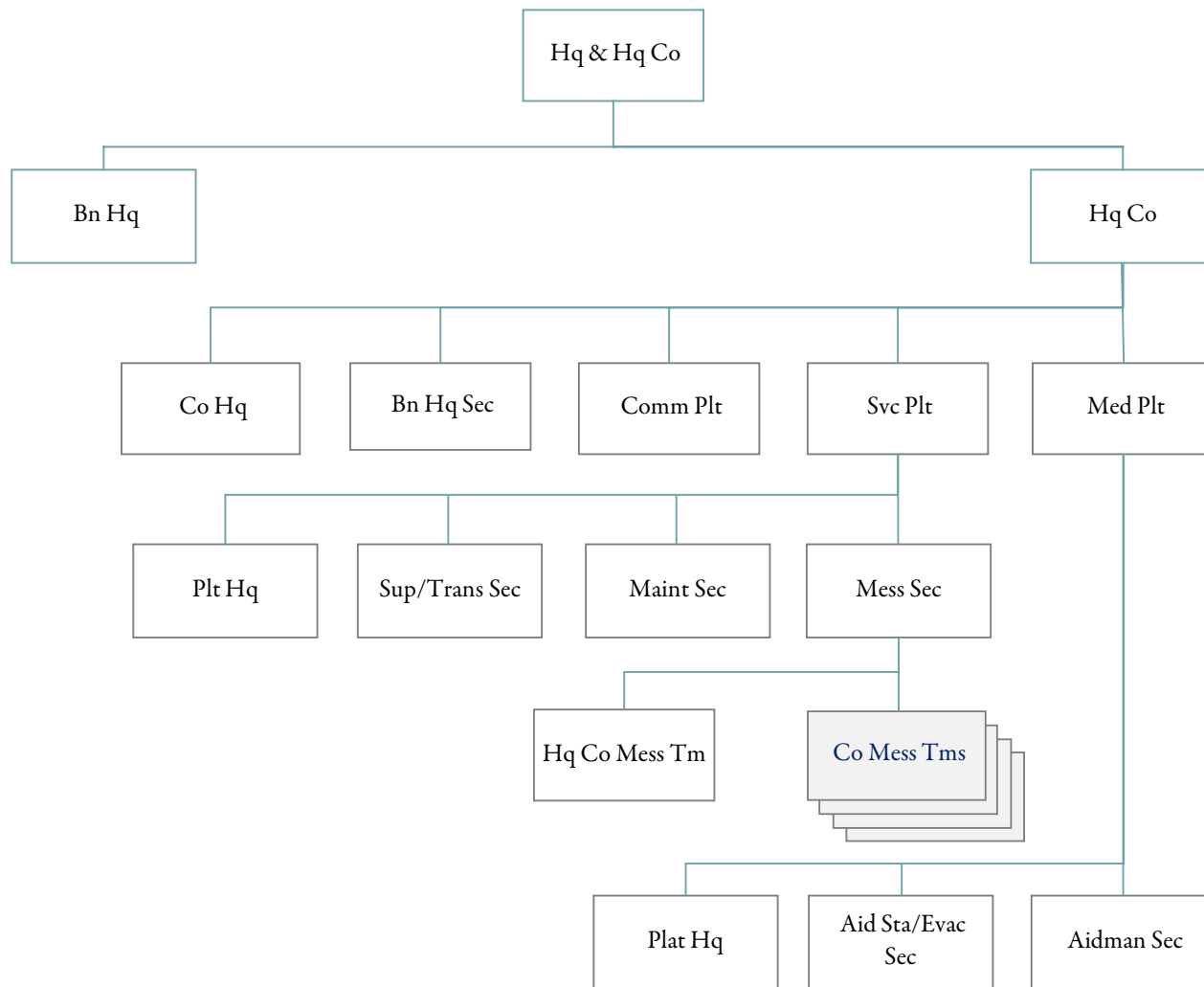


**PERSONNEL ALLOWANCES**

PARA	DESCRIPTION	GRADE	STRENGTH	REMARKS		
				1	2	3
01	HHC INF BN AMBL DIV					
	OFFICERS		11			
	WARRANT OFFICERS					
	ENLISTED		111			
	PARA TOTAL		122			
02	3 RIFLE CO INF BN					
	OFFICERS		15			
	WARRANT OFFICERS					
	ENLISTED		405			
	PARA TOTAL		420			
03	CBT SPT CO INF BN					
	OFFICERS		7			
	WARRANT OFFICERS					
	ENLISTED		175			
	PARA TOTAL		182			
	SRC TOTAL		724			

**HEADQUARTERS AND HEADQUARTERS COMPANY  
INFANTRY BATTALION, AIRMOBILE DIVISION**

Designation: Headquarters, \_\_\_\_ Battalion, \_\_\_\_ Infantry  
Headquarters Company, \_\_\_\_ Battalion, \_\_\_\_ Infantry



**PERSONNEL ALLOWANCES**

PARA	DESCRIPTION	GRADE	STRENGTH	REMARKS		
				1	2	3
01	BN HEADQUARTERS					
	BATTALION COMMANDER	LTC	1	11		
	EXECUTIVE OFFICER	MAJ	1	11		
	S3	MAJ	1	11		
	COMMEL OFFICER	CPT	1	36		
	S1	CPT	1	31		
	S2	CPT	1			
	S4	CPT	1			
	COMD SERGEANT MAJOR	E-9	1			
	PARA TOTAL		8			
02	COMPANY HEADQUARTERS					
	COMPANY COMMANDER	CPT	1	11		
	FIRST SERGEANT	E-8	1	10		
	SUPPLY SERGEANT	E-6	1			
	COMPANY CLERK	E-5	1			
	ARMORER	E-4	1			
	RADIO TELEPHONE OP	E-3	1			
03	BATTALION HQ SECTION					
	S3 AIR	CPT	1			
	INTELLIGENCE SGT	E-8	1	40		
	OPERATION SGT	E-8	1	40		
	A OPERATIONS SGT	E-7	1	08	40	
	CAREER COUNSELOR	E-7	1			
	PERSONNEL STAFF NCO	E-7	1	07		
	LEGAL CLERK	E-6	1			
	CLERK TYPIST	E-4	3	40		
	OPERATIONS ASSISTANT	E-4	1	40		
	PARA TOTAL		11			
04	COMMUNICATION PLATOON					
	COMMUNICATION CHIEF	E-7	1			
	RAT'T TEAM CHIEF	E-5	1			
	TEAM CHIEF	E-5	1			
	FLD RADIO MECH	E-4	1			
	GND SURVL RADAR MECH	E-4	1			
	RADIO TT OPERATOR	E-4	2	44		
	SR FLD SWITCHBOARD OP	E-4	1			
	SR FLD WIREMAN	E-4	1			
	SR MESSAGE CLERK	E-4	1			
	SR RADIO OPERATOR	E-4	1			
	FIELD SWITCHBOARD OP	E-3	1			
	FIELD WIREMAN	E-3	2			
	MESSAGE CLERK	E-3	3			
	RADIO OPERATOR	E-3	1	01		
RADIO TELEPHONE OPERATOR	E-3	1	01			
	PARA TOTAL		19			
05	SERVICE PLATOON HQ					

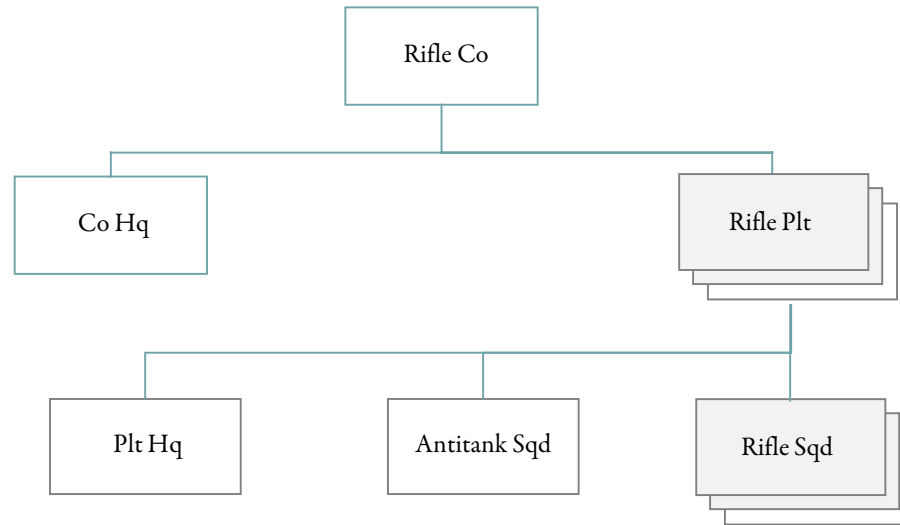
PARA	DESCRIPTION	GRADE	STRENGTH	REMARKS		
				1	2	3
	PLATOON LEADER	LT	1	25		
	PARA TOTAL		1			
06	SUPPLY-TRANS SEC					
	SUPPLY SERGEANT	E-7	1			
	AMMUNITION CHIEF	E-6	1			
	AMMUNITION SPECIALIST	E-4	4			
	SR LT VEH DRIVER	E-4	1			
	SUPPLY SPECIALIST	E-4	2			
	LT VEH DRIVER	E-3	5			
	POL SUPPLY HANDLER	E-3	1	01		
	SUPPLY CLERK	E-3	2	44	40	
	PARA TOTAL		17			
07	MAINTENANCE SECTION					
	MOTOR SERGEANT	E-6	1			
	EQUIP MAINT CLERK	E-4	1			
	PLL CLERK	E-4	1	01		
	POWER GEN OP/MECH	E-4	1			
	WHEEL VEH MECH	E-4	2			
	LT VEH DRIVER	E-3	1			
	WHEEL VEH MECH HLPR	E-3	1			
	PARA TOTAL		8			
08	HQ CO MESS TEAM					
	MESS STEWARD	E-7	1			
	FIRST COOK	E-6	1			
	FIRST COOK	E-5	1			
	COOK	E-4	1			
	PARA TOTAL		4			
09	4 CO MESS TEAMS					
	MESS STEWARD	E-7	4			
	FIRST COOK	E-6	4			
	FIRST COOK	E-5	7			
	COOK	E-4	6			
	PARA TOTAL		21			
10	MEDICAL PLATOON HQ					
	MEDICAL OP ASST	LT	1	41		
	PLATOON SERGEANT	E-7	1			
	PARA TOTAL		2			
11	AID STATION-EVAC SEC					
	SECTION SERGEANT	E-6	1			
	SR CLINICAL SPECIALIST	E-6	1			
	CLINICAL SPECIALIST	E-5	2			
	SR MEDICAL AIDMAN	E-5	3			
	MEDICAL AIDMAN	E-4	3	11		
	PARA TOTAL		10			
12	AIDMAN SECTION					
	COMPANY AIDMAN	E-5	15	11		
	PARA TOTAL		15			
	SRC TOTAL		122			

PARA	DESCRIPTION	GRADE	STRENGTH	REMARKS		
				1	2	3
	REMARKS					
01	ALSO LIGHT VEHICLE DRIVER					
07	ALSO INFORMATION NCO					
08	ALSO EDUCATION NCO					
10	ADDITIONAL DUTY AS CAREER COUNSELOR					
11	ARMED WITH PISTOL AUTOMATIC CAL. 45					
25	ALSO ASST S4					
31	ALSO INFORMATION OFFICER					
36	ALSO COMMANDS COMMUNICATION PLATOON					
40	ALSO RADIO TELEPHONE OPERATOR					
41	ALSO BN STAFF OFFICER					
42	1 EM ALSO RADIO TELEPHONE OPERATOR					
44	REMARK 01 APPLIES TO 1 EM					
45	ALSO PREFIX 5 QUALIFIED					

EQUIPMENT ALLOWANCE		
PARA	DESCRIPTION	LEVEL
01	BN HEADQUARTERS	
	BAYONET-KNIFE W/SCABBARD FOR M16A1 RIFLE	8
	PISTOL CALIBER .45 AUTOMATIC	3
	RIFLE 5.56 MILLIMETER	5
02	COMPANY HEADQUARTERS	
	BAYONET-KNIFE W/SCABBARD FOR M16A1 RIFLE	7
	PISTOL CALIBER .45 AUTOMATIC	1
	RADIO SET AN/PRC-77	1
	RIFLE 5.56 MILLIMETER	6
03	BATTALION HQ SECTION	
	BAYONET-KNIFE W/SCABBARD FOR M16A1 RIFLE	11
	MACHINE GUN 7.62 MILLIMETER LIGHT FLEXIBLE	1
	MOUNT TRIPOD MACHINE GUN 7.62 MILLIMETER	1
	RADIO SET AN/PRC-77	7
	RIFLE 5.56 MILLIMETER	11
04	COMMUNICATION PLATOON	
	BAYONET-KNIFE W/SCABBARD FOR M16A1 RIFLE	19
	LAUNCHER GRENADE 40 MILLIMETER SGLE SHOR RIFLE MTD DTCHBLE	1
	RADIO SET AN/PRC-74	5
	RADIO SET AN/PRC-77	3
	RADIO SET AN/VRC-46 MOUNTED IN TRUCK ¼ TON	2
	RADIO SET AN/VRC-49 MOUNTED IN TRUCK ¼ TON	1
	RADIO SET CONTROL GROUP AN/GRA-39	3
	RADIO TELETYPEWRITER SET AN/VSC-2	1
	RIFLE 5.56 MILLIMETER	19
	SWITCHBOARD TELEPHONE MANUAL SB-22/PT	2
	TELEPHONE SET TA-312/PT	24
	TRAILER CARGO ¼ TON 2 WHEEL	3
	TRUCK UTILITY ¼ TON 4 X 4	3
05	SERVICE PLATOON HQ	
	BAYONET-KNIFE W/SCABBARD FOR M16A1 RIFLE	1
	RADIO SET AN/PRC-77	1
	RIFLE 5.56 MILLIMETER	1
06	SUPPLY-TRANS SEC	
	BAYONET-KNIFE W/SCABBARD FOR M16A1 RIFLE	17
	LAUNCHER GRENADE 40 MILLIMETER SGLE SHOT RIFLE MTD DTCHBLE	2
	MACHINE GUN 7.62 MILLIMETER LIGHT FLEXIBLE	1
	MOUNT TRIPOD MACHINE GUN 7.62 MILLIMETER	1
	RIFLE 5.56 MILLIMETER	17
	TRUCK PLATFORM UTILITY ½ TON 4 X 4	
07	MAINTENANCE SECTION	
	BAYONET-KNIFE W/SCABBARD FOR M16A1 RIFLE	8
	LAUNCHER GRENADE 40 MILLIMETER SGLE SHOT RIFLE MTD DTCHBLE	1
	RIFLE 5.56 MILLIMETER	8
	TRAILER CARGO ¾ TON 2 WHEEL	2
	TRUCK CARGO ¾ TON 4 X 4	2
08	HQ CO MESS TEAM	
	BAYONET-KNIFE W/SCABBARD FOR M16A1 RIFLE	5

PARA	DESCRIPTION	LEVEL
	LAUNCHER GRENADE 40 MILLIMETER SGLE SHOT RIFLE MTD DTCHBLE	1
	RIFLE 5.56 MILLIMETER	5
09	4 CO MESS TEAMS	
	BAYONET-KNIFE W/SCABBARD FOR M16A1 RIFLE	21
	LAUNCHER GRENADE 40 MILLIMETER SGLE SHOT RIFLE MTD DTCHBLE	4
	RIFLE 5.56 MILLIMETER	21
10	MEDICAL PLATOON HQ	
	RADIO SET AN/PDR-27	1
	RIFLE 5.56 MILLIMETER	2
11	AID STATION	
	PISTOL CALIBER .45 AUTOMATIC	4
	RIFLE 5.56 MILLIMETER	6
12	AIDMAN SECTION	
	PISTOL CALIBER .45 AUTOMATIC	15

**RIFLE COMPANY, INFANTRY BATTALION**  
**AIRMOBILE DIVISION**  
Designation: Company \_\_\_\_, \_\_\_\_, Battalion, \_\_\_\_, Infantry



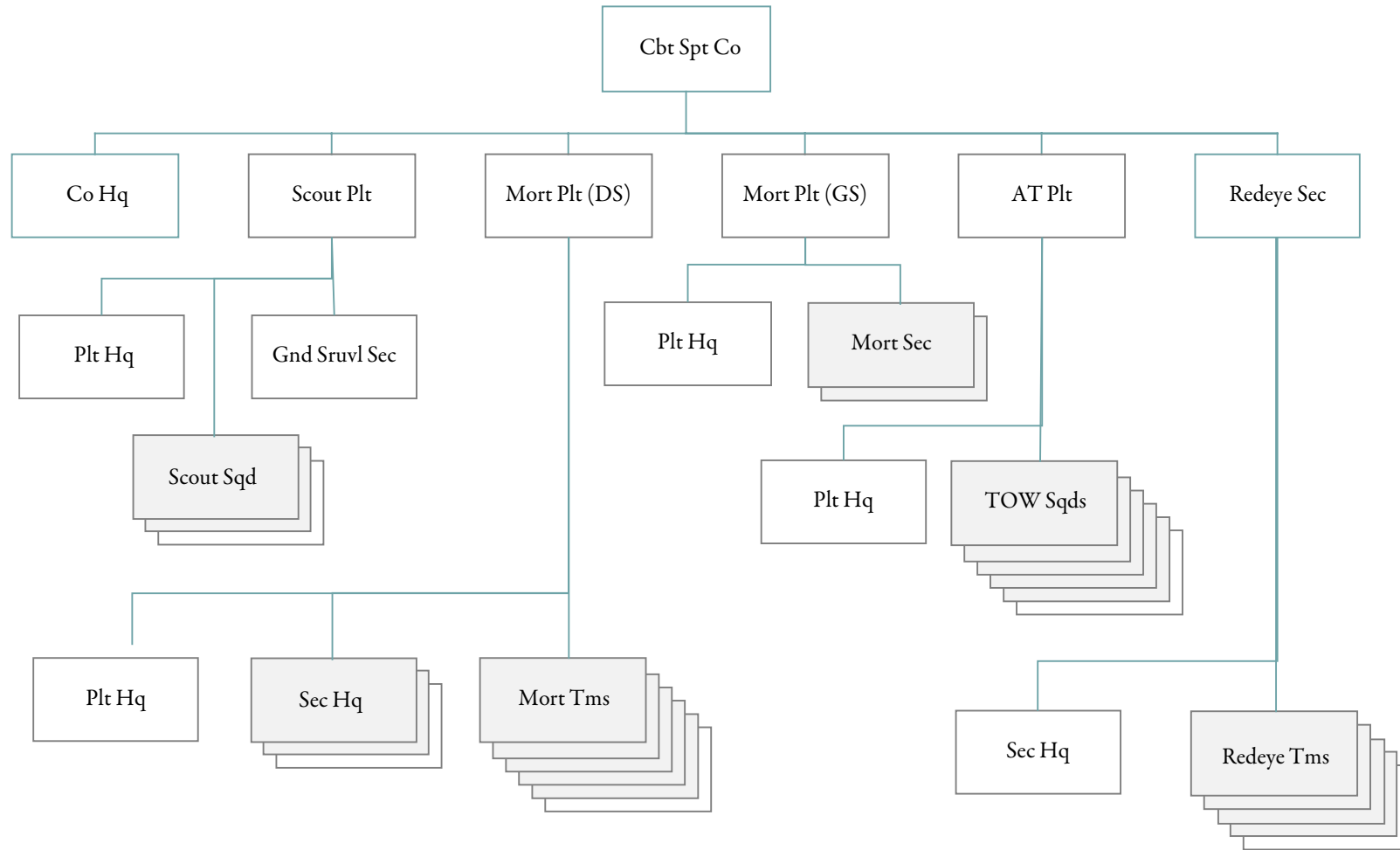
**PERSONNEL ALLOWANCES**

PARA	DESCRIPTION	GRADE	STRENGTH	REMARKS		
				1	2	3
01	COMPANY HEADQUARTERS					
	COMPANY COMMANDER	CPT	1	11		
	EXECUTIVE OFFICER	LT	1			
	FIRST SERGEANT	E-8	1	10		
	SUPPLY SERGEANT	E-6	1			
	COMMUNICATION CHIEF	E-5	1	40		
	COMPANY CLERK	E-5	1	40		
	ARMORER	E-4	1	01		
	FLD RADIO MECH	E-4	1			
	FLD WIREMAN	E-3	1			
	MESSENGER	E-3	1	40		
	RADIO TELEPHONE OP	E-3	1	41		
	PARA TOTAL		11			
02	3 RIFLE PLATOON HQ					
	PLATOON LEADER	LT	3			
	PLATOON SERGEANT	E-7	3			
	RADIO TELEPHONE OP	E-3	3			
	PARA TOTAL		9			
03	9 RIFLE SQUADS					
	SQUAD LEADER	E-6	9			
	TEAM LEADER	E-5	18			
	GRENADIER	E-4	18			
	MACHINE GUNNER	E-4	18	11		
	ASST MACHINE GUNNER	E-3	18			
	RIFLEMAN	E-3	18			
	PARA TOTAL		99			
04	3 ANTITANK SQD					
	SQUAD LEADER	E-5	3			
	GUNNER	E-4	6	11		
	AMMUNITION BEARER	E-3	6			
	ASST GUNNER	E-3	6	11		
	PARA TOTAL		21			
	SRC TOTAL		140			
	REMARKS					
01	ALSO LIGHT VEHICLE DRIVER					
10	ADDITIONAL DUTY AS CAREER COUNSELOR					
11	ARMED WITH PISTOL AUTOMATIC CAL .45					
40	ALSO RAD TELEPHONE OP					
41	OPERATES AN/PAC-74 POOLED AT BN WHEN ISSUED FOR LONG RANGE COMMUNICATION					

**EQUIPMENT ALLOWANCE**

PARA	DESCRIPTION	LEVEL
01	COMPANY HEADQUARTERS	
	BAYONET-KNIFE W/SCABBARD FOR RIFLE M16A1	11
	LAUNCHER GRENADE 40 MILLIMETER SGLE SHOT RIFLE MTD DTCHBLE	2
	PISTOL CALIBER .45 AUTOMATIC	1
	RADIO SET AN/PRC-77	4
	RIFLE 5.56 MILLIMETER	10
	SWITCHBOARD TELEPHONE MANUAL SB-993/GT	2
	TELEPHONE SET TA-1/PT	2
	TELEPHONE SET TA-312/PT	2
	TRUCK PLATFORM UTILITY ½ TON 4 X 4	1
02	3 RIFLE PLATOON HQ	
	BAYONET-KNIFE W/SCABBARD FOR RIFLE M16A1	9
	RADIO SET AN/PRC-77	3
	RIFLE 5.56 MILLIMETER	9
03	9 RIFLE SQUADS	
	BAYONET-KNIFE W/SCABBARD FOR RIFLE M16A199	
	LAUNCHER GRENADE 40 MILLIMETER SGLE SHOT RIFLE MTD DTCHBLE	18
	MACHINE GUN 7.62 MILLIMETER LIGHT FLEXIBLE	18
	MOUNT TRIPOD MACHINE GUN 7.62 MILLIMETER	18
	NIGHT VISION SIGHTS CREW SERVED WEAPONS AN/TVS-2	18
	NIGHT VISION SIGHT INDIVIDUAL SERVED WEAPONS AN/PVS-2	18
	PISTOL CALIBER .45 AUTOMATIC	18
	RIFLE 5.56 MILLIMETER	81
	BIPOD RIFLE 5.56 MILLIMETER W/CARRYING CASE F/M16A1 RIFLE	18
04	3 ANTI TANK SQD	
	BAYONET-KNIFE W/SCABBARD FOR RIFLE M16A1	21
	PISTOL CALIBER .45 AUTOMATIC	12
	RIFLE 5.56 MILLIMETER	9
	RIFLE RECOILLESS 90 MILLIMETER	3

**COMBAT SUPPORT COMPANY**  
**INFANTRY BATTALION, AIRMOBILE DIVISION**  
Designation: Combat Support Company, \_\_\_\_ Battalion, \_\_\_\_ Infantry



**PERSONNEL ALLOWANCES**

PARA	DESCRIPTION	GRADE	STRENGTH	REMARKS		
				1	2	3
01	COMPANY HQ					
	COMPANY COMMANDER	CPT	1	11		
	EXECUTIVE OFFICER	LT	1			
	FIRST SERGEANT	E-8	1	10		
	SUPPLY SERGEANT	E-6	1			
	COMMUNICATION CHIEF	E-5	1			
	COMPANY CLERK	E-5	1			
	ARMORER	E-4	1	01		
	FLD RADIO MECH	E-4	1			
	SR SWBD OPERATOR	E-4	1			
	RADIO TELEPHONE OP	E-3	2			
	SUPPLY CLERK	E-3	1			
	PARA TOTAL		12			
02	SCOUT PLT HQ					
	PLATOON LEADER	LT	1			
	PLATOON SERGEANT	E-7	1			
	RADIO TELEPHONE OP	E-3	1			
	PARA TOTAL		3			
03	3 SCOUT SQUADS					
	SQUAD LEADER	E-6	3			
	ASST SQUAD LEADER	E-5	3			
	SR SCOUT OBSERVER	E-4	12			
	SCOUT OBSERVER	E-3	12	43		
	PARA TOTAL		30			
04	GROUND SURVL SECTION					
	SECTION LEADER	E-6	1			
	TEAM LEADER	E-5	4			
	SR GND SURVL RDR CRMN	E-5	4			
	GND SURVL RADO CRMN	E-4	4			
	RADIO TELEPHONE OP	E-3	1			
	PARA TOTAL		14			
05	81MM MORT PLT HQ (DS)					
	PLATOON LEADER	LT	1			
	PLATOON SERGEANT	E-7	1			
	FIRE DIRECTION CHIEF	E-4	1			
	FORWARD OBSERVER	E-5	6			
	FIR DIRCMPT	E-5	3			
	RADIO TELEPHONE OP	E-3	3	48		
	PARA TOTAL		15			
06	3 81 MORT SEC HQ (DS)					
	SECTION LEADER	E-6	3			
	AMMUNITION BEARER	E-3	9			
	PARA TOTAL		12			
07	6 81 MORT SQD (DS)					
	SQUAD LEADER	E-5	6			
	GUNNER	E-4	6	11		

PARA	DESCRIPTION	GRADE	STRENGTH	REMARKS		
				1	2	3
	ASSISTANT GUNNER	E-3	6	01	11	
	PARA TOTAL		18			
08	81MM MORT PLT HQ (GS)					
	PLATOON LEADER	LT	1			
	PLATOON SERGEANT	E-7	1			
	FIRE DIRECTION CHIEF	E-6	1			
	FORWARD OBSERVER	E-5	1			
	FIRE DIR COMPT	E-5	2			
	RADIO TELEPHONE OP	E-3	2	48		
	PARA TOTAL		8			
09	2 81MM MORT SEC (GS)					
	SECTION LEADER	E-6	2			
	81MM MORTAR SQD LEADER	E-5	6			
	GUNNER	E-4	6	11		
	AMMUNITION BEARER	E-3	8	42		
	ASSISTANT GUNNER	E-3	6	11		
	RADIO TELEPHONE OPERATOR	E-3	2			
	PARA TOTAL		30			
10	ANTITANK PLATOON HQ					
	PLATOON LEADER	LT	1			
	PLATOON SERGEANT	E-7	1			
	RADIO TELEPHONE OPERATOR	E-3	2	01		
	PARA TOTAL		4			
11	4 TOW SQUADS					
	SECTION LEADER	E-6	3	45		
	SQUAD LEADER	E-5	3			
	GUNNER	E-4	6	11		
	AMMUNITION BEARER	E-3	6	01		
	ASSISTANT GUNNER	E-3	6	01	11	
	PARA TOTAL		24			
12	REDEYE SECTION HQ					
	SECTION LEADER	LT	1			
	SECTION SERGEANT	E-6	1	01		
	PARA TOTAL		2			
13	5 REDEYE TEAMS					
	REDEYE TEAM CHIEF	E-5	5			
	REDEYE GUNNER	E-4	5	11		
	PARA TOTAL		10			
	SRC TOTAL		182			
	REMARKS					
01	ALSO LT VEH DRIVER					
10	ADDITIONAL DUTY AS CAREER COUNSELOR					
11	ARMED WITH PISTOL AUTOMATIC CAL .45					
42	REMARK 01 APPLIES TO 6 EM					
43	ONE EM PER SQUAD ALSO DESIGNATED RADIO TELEPHONE OPERATOR					
45	ALSO ACTS AS SQUAD LEADER					
48	ONE EM ALSO SWBD OPERATOR					

EQUIPMENT ALLOWANCE		
PARA	DESCRIPTION	LEVEL
01	COMPANY HQ	
	BAYONET-KNIFE W/SCABBARD FOR M16A1 RIFLE	12
	LAUNCHER GRENADE 40 MILLIMETER SGLE SHOT RIFLE MTD DTCHBLE	1
	NIGHT VISION SIGHT TRIPOD MOUNTED AN/TVS-4	1
	PISTOL CALIBER .45 AUTOMATIC	1
	RADIO SET AN/PRC-77	4
	RIFLE 5.56 MILLIMETER	11
	SWITCHBOARD TELEPHONE MANUAL SB-22/PT	1
	TELEPHONE SET TA-312/PT	5
	TRAILER CARGO ¼ TON 2 WHEEL	1
	TRUCK UTILITY ¼ TON 4 X 4	1
02	SCOUT PLT HQ	
	BAYONET-KNIFE W/SCABBARD FOR M16A1 RIFLE	3
	RADIO SET AN/PRC-77	2
	RIFLE 5.56 MILLIMETER	3
03	3 SCOUT SQUADS	
	BAYONET-KNIFE W/SCABBARD FOR M16A1 RIFLE	30
	LAUNCHER GRENADE 40 MILLIMETER SGLE SHOT RIFLE MTI DTCHBLE	6
	NIGHT VISION SIGHT INDIVIDUAL SERVEP WEAPON AN/PVS2	6
	RADIO SET AN/PRC-77	3
	RIFLE 5.56 MILLIMETER	30
04	GROUND SURVL SECTION	
	BAYONET-KNIFE W/SCABBARD FOR M16A1 RIFLE	14
	RADAR SET AN/PPS-5	4
	RADIO SET AN/PRC-77	4
	RIFLE 5.56 MILLIMETER	14
05	MORTAR PLT HQ (DS)	
	BAYONET-KNIFE W/SCABBARD FOR M16A1 RIFLE	15
	LAUNCHER GRENADE 40 MILLIMETER SGLE SHOT RIFLE MTD DECHBLE	2
	RADIO SET AN/PRC-77	13
	RIFLE 5.56 MILLIMETER	15
	SWITCHBOARD TELEPHONE MANUAL SB-22/PT	1
	TELEPHONE SET TA-312/PT	10
06	3 81MM MORTAR SECT HQ	
	BAYONET-KNIFE W/SCABBARD FOR M16A1 RIFLE	12
	RADIO SET AN/PRC-77	3
	RIFLE 5.56 MILLIMETER	12
07	6 81MM MORTAR TEAMS	
	BAYONET-KNIFE W/SCABBARD FOR M16A1 RIFLE	18
	MORTAR 81 MILLIMETER ON MOUNT	6
	PISTOL CALIBER .45 AUTOMATIC	12
	RIFLE 5.56 MILLIMETER	6
	TRUCK PLATFORM UTILITY ½ TON 4 X 4	6
08	MORTAR PLT HQ (GS)	
	BAYONET-KNIFE W/SCABBARD FOR M16A1 RIFLE	8
	LAUNCHER GRENADE 40 MILLIMETER SGLE SHOT RIFLE MTD DTCHBLE	2
	RADIO SET AN/PRC-77	7
	RIFLE 5.56 MILLIMETER	8

PARA	DESCRIPTION	LEVEL
	SWITCHBOARD TELEPHONE MANUAL SB-22/PT	1
	TELEPHONE SET TA-312/PT	4
09	2 81MM MORTAR SECT HQ	
	BAYONET -KNIFE W/SCABBARD FOR M16A1 RIFLE	30
	MORTAR 81 MILLIMETER ON MOUNT	6
	PISTOL CALIBER .45 AUTOMATIC	12
	RADIO SET AN/PRC-77	2
	RIFLE 5.56 MILLIMETER	18
	TRUCK PLATFORM UTILITY ½ TON 4 X 4	6
10	ANTITANK PLT HQ	
	BAYONET -KNIFE W/SCABBARD FOR M16A1 RIFLE	3
	RADIO SET AN/GRC-160 MTD IN TRUCK UTILITY ¼ TON	1
	RADIO SET AN/PRC-77	2
	RIFLE 5.56 MILLIMETER	3
	SWITCHBOARD TELEPHONE MANUAL SB-993/GT	1
	TELEPHONE SET TA-312/PT	2
	TRAILER CARGO ¼ TON 2 WHEEL	1
	TRUCK UTILITY ¼ TON 4 X 4	1
11	6 TOW SQUADS	
	BAYONET -KNIFE W/SCABBARD FOR M16A1 RIFLE	24
	LAUNCHER TUBULAR GUIDED MISSILE (TOW)	6
	PISTOL CALIBER .45 AUTOMATIC	12
	RADIO SET AN/PRC-77	6
	RIFLE 5.56 MILLIMETER	12
	TRUCK PLATFORM UTILITY ½ TON 4 X 4	6
	NIGHT SIGHT TOW WEAPONS SYSTEM	6
12	REDEYE SECTION HQ	
	BAYONET -KNIFE W/SCABBARD FOR M16A1 RIFLE	2
	RADIO SET AN/GRC-160 MOUNTED IN TRUCK UTILITY ¼ TON	1
	RADIO SET AN/PRC-77	2
	RADIO SET CONTROL GROUP AN/GRA-39	1
	RIFLE 5.56 MILLIMETER	2
	TRAILER CARGO 8 TON 2 WHEEL	1
	TRUCK UTILITY ¼ TON 4 X 4	1
13	5 REDEYE TEAMS	
	BAYONET -KNIFE W/SCABBARD FOR M16A1 RIFLE	10
	PISTOL CALIBER .45 AUTOMATIC	5
	RADIO SET AN/PRC-77	5
	RIFLE 5.56 MILLIMETER	5
	CARRIER HANDLING CASE (REDEYE)	5