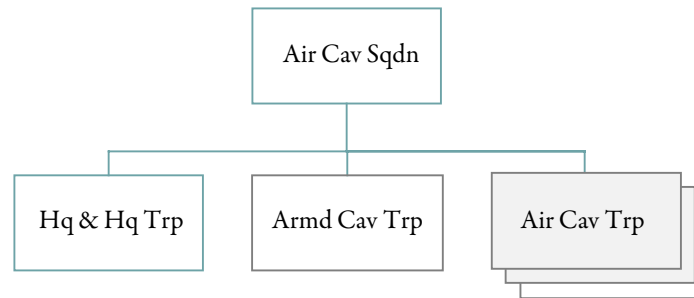


**AIR CAVALRY SQUADRON
INFANTRY DIVISION**

Designation: ____ Squadron (Air), ____ Cavalry

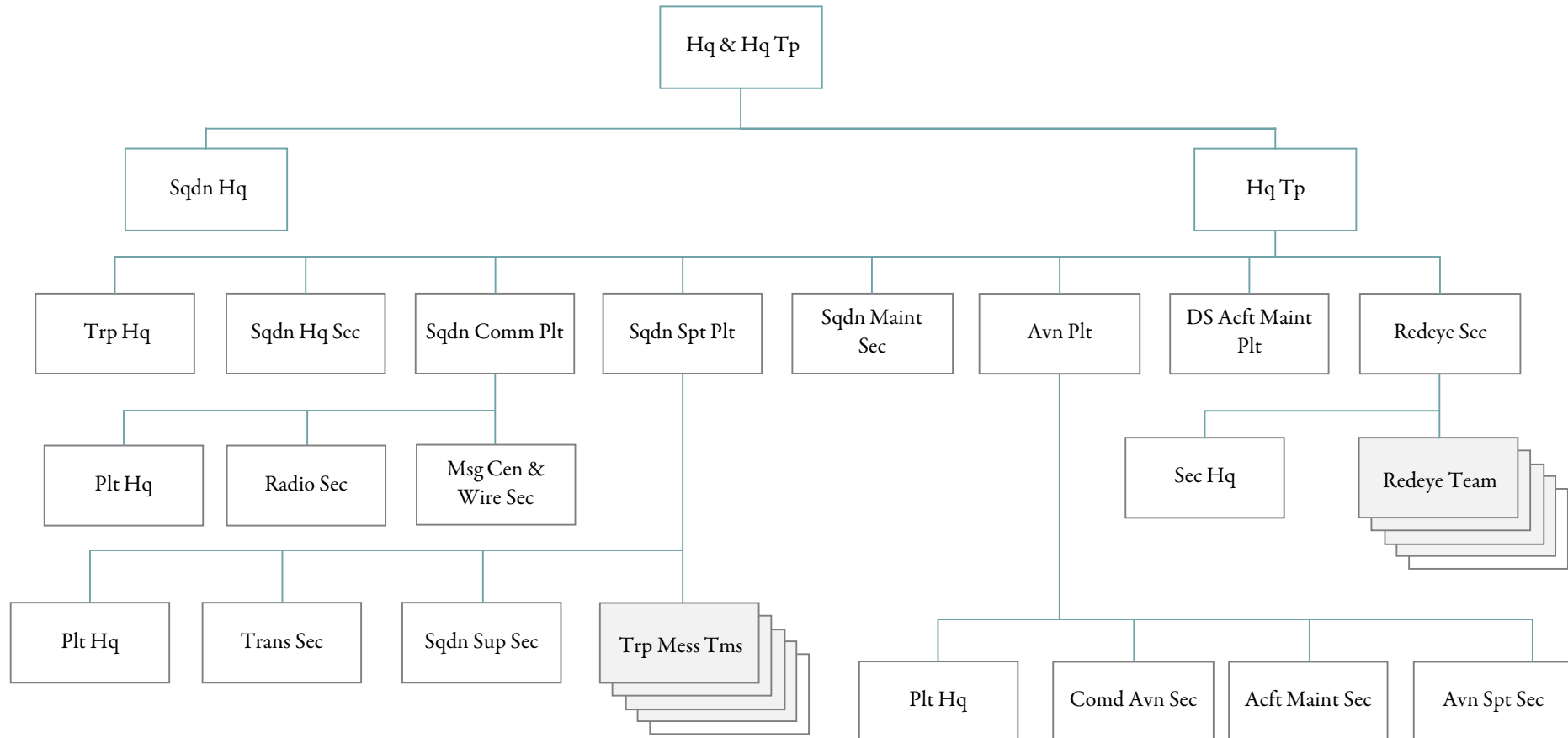


PERSONNEL ALLOWANCES

PARA	DESCRIPTION	GRADE	STRENGTH	REMARKS		
				1	2	3
01	HQ & HQ TROOP					
	OFFICERS		22			
	WARRANT OFFICERS		4			
	ENLISTED		258			
	PARA TOTAL		284			
02	ARMD CAV TRP					
	OFFICERS		5			
	WARRANT OFFICERS					
	ENLISTED		159			
	PARA TOTAL		164			
03	3 AIR CAV TRP					
	OFFICERS		42			
	WARRANT OFFICERS		55			
	ENLISTED		408			
	PARA TOTAL		549			
	SRC TOTAL		997			

**HEADQUARTERS AND HEADQUARTERS TROOP
AIR CAVALRY SQUADRON
INFANTRY DIVISION**

Designation: Headquarters, ____ Squadron (Air), ____ Cavalry
Headquarters Troop, ____ Squadron (Air), ____ Cavalry



PERSONNEL ALLOWANCES

PARA	DESCRIPTION	GRADE	STRENGTH	REMARKS		
				1	2	3
01	SQDN HEADQUARTERS					
	SQUADRON COMMANDER	LTC	1	17		
	EXECUTIVE OFFICER	MAJ	1	17		
	S-3	MAJ	1	17	37	
	S-1	CPT	1	31		
	S-2	CPT	1	17		
	S-4	CPT	1	17		
	AVN MEDICAL OFFICER	CPT	1	17	44	
	AVN SAFETY OFFICER	CPT	1	17		
	CHAPLAIN	CPT	1			
	COMMEL OFFICER	CPT	1	41		
	MAINT OFFICER	CPT	1	17	46	
	COMD SERGEANT MAJOR	E-9	1			
	PARA TOTAL		12			
02	TROOP HEADQUARTERS					
	TROOP COMMANDER	CPT	1	17		
	EXECUTIVE OFFICER	LT	1	17		
	FIRST SERGEANT	E-8	1	10		
	MOTOR SERGEANT	E-7	1			
	SUPPLY SERGEANT	E-6	1			
	SR WHL VEH MECH	E-5	2			
	TROOP CLERK	E-5	1			
	ARMORER	E-4	1	01		
	GP POWER GEN OP/MECH	E-4	3			
	PLL CLERK	E-4	1			
	WHEEL VEH MECH	E-4	6			
	WRECKER OPERATOR	E-4	1			
	LIGHT VEH DRIVER	E-3	1			
	PWR GEN EQUIP APPR	E-3	2	01		
	SUPPLY CLERK	E-3	1	01		
	WHL VEH MECH HLPR	E-3	3			
	PARA TOTAL		27			
03	SQDN HQ SECTION					
	ASST S-3	CPT	1	17		
	LIAISON OFFICER	LT	3	17		
	INTELLIGENCE SGT	E-8	1			
	OPERATIONS SERGEANT	E-8	1			
	ARMY CAREER COUNSELLOR	E-7	1			
	ASST OPN SGT	E-7	1	08		
	PERS STAFF NCO	E-7	1	07		
	FLIGHT OPN CHIEF	E-6	1			
	LEGAL CLERK	E-6	1			
	FLIGHT OP SP	E-5	1	01		
	RADIO TM CHIEF	E-5	1			
	CHAPLAIN ASST	E-4	1	01		
	CLERK TYPIST	E-4	2	01		

PARA	DESCRIPTION	GRADE	STRENGTH	REMARKS		
				1	2	3
	FLIGHT OP SP	E-4	2	01		
	GENERAL DRAFTSMAN	E-4	1			
	LIAISON AGENT	E-4	3	01		
	SR RADIO OPERATOR	E-4	3	01		
	LIGHT VEH DRIVER	E-3	2			
	RADIO OPERATOR	E-3	3	01		
	PARA TOTAL		30			
04	SQDN COMM PLT HQ					
	COMM CHIEF	E-6	1			
	FIELD RADIO MECH	E-4	1			
	RADIO TEL OP	E-3	1	01		
	PARA TOTAL		3			
05	RADIO SECTION					
	SECTION CHIEF	E-5	1			
	RAT'T TEAM CHIEF	E-5	1			
	RAT'T OPERATOR	E-4	4	45		
06	MSG CEN-WIRE SEC					
	SECTION SERGEANT	E-5	1			
	SR FIELD SWBD OP	E-4	1			
	FIELD SWBD OPERATOR	E-3	1			
	FIELD WIREMAN	E-3	1			
	MESSAGE CLERK	E-3	1			
	MESSENGER	E-3	1	01		
	PARA TOTAL		6			
07	SQDN SPT PLT HQ					
	PLATOON LEADER	LT	1	25		
	LIGHT VEH DRIVER	E-3	1			
	PARA TOTAL		2			
08	TRANSPORTATION SEC					
	SECTION SERGEANT	E-6	1			
	SR LT VEH DRIVER	E-5	1			
	AMMO SPECIALIST	E-4	1			
	LIGHT VEH DRIVER	E-4	7			
	AMMO HANDLER	E-3	4	43		
	PARA TOTAL		14			
09	SQDN SUPPLY SECTION					
	SUPPLY SERGEANT	E-7	1	51		
	SUPPLY SPECIALIST	E-5	1			
	SUPPLY SPECIALIST	E-4	3	45		
	SUPPLY CLERK	E-3	2			
	PARA TOTAL		7			
10	5 TRP MESS TEAMS					
	MESS STEWARD	E-7	5			
	FIRST COOK	E-6	5			
	FIRST COOK	E-5	11	49		
	COOK	E-4	9	48		
	PARA TOTAL		30			
11	SQDN MEDICAL SECTION					

PARA	DESCRIPTION	GRADE	STRENGTH	REMARKS		
				1	2	3
	MEDICAL OP ASST	LT	1			
	SECTION SERGEANT	E-6	1			
	CLINICAL SPECIALIST	E-5	1			
	SR MEDICAL AIDMAN	E-5	2			
	TROOP AIDMAN	E-5	12			11
	AMBULANCE DRIVER	E-4	2			
	MEDICAL AIDMAN	E-4	3			46
	PARA TOTAL		22			
12	AVIATION PLT HQ					
	PLATOON COMMANDER	CPT	1	17		
	PLATOON SERGEANT	E-7	1			
	TECH INSPECTOR	E-6	1	17		
	LIGHT VEH DRIVER	E-3	1			
	PARA TOTAL		4			
13	COMD AVN SEC					
	SECTION LEADER	LT	1	17	35	
	HELICOPTER PILOT	WO	3	17	47	
	UH-1 CREW CHIEF	E-5	4	17		
	PARA TOTAL					
14	AIRCRAFT MAINT SEC					
	SECTION SERGEANT	E-6	1			
	SR UH-1 RPMN	E-5	1			
	AVIONICS MECH	E-4	1			
	REPAIR PARTS SP	E-4	1	01		
	UH-1 REPAIRMAN	E-4	1	01		
	PARA TOTAL		5			
15	AVIATION SPT SEC					
	SECTION SGT	E-6	1			
	CRASH RESCUE TM CHIEF	E-5	1			
	ACFT FUELS HAND SP	E-4	2	01		
	CRASH RESCUE SP	E-4	2	40		
	AIRCRAFT SERVICEMAN	E-3	2	40		
	PARA TOTAL		8			
16	DS ACFT MAINT PLT					
	ACFT REPAIR TECH	WO	1	17		
	PLATOON SERGEANT	E-7	1			
	CHIEF HELI TECH INSP	E-7	1	17		
	MAINT SUPV	E-7	1	17		
	ACFT ENG RPR SUPV	E-6	1			
	ACFT RTR-PRP RPR SUPV	E-6	1			
	AIRFRAME RPR SUPV	E-6	1			
	HEL TECH INSP	E-6	3	17		
	ACFT INST RPMN	E-5	1			
	AIRFRAME WELDER	E-5	1			
	REPAIR PARTS SP	E-5	1			
	SR ACFT TURB ENG RPMN	E-5	5			
	SR AIRFRAME RPMN	E-5	6			
	SR ACRT RTR & PRP RPMN	3				

PARA	DESCRIPTION	GRADE	STRENGTH	REMARKS		
				1	2	3
	SR ACFT PWR TR RPMN	E-5	2			
	SR AH-1G RPMN	E-5	4			
	SR OH-6 RPMN	E-5	4			
	SR UH-1 RPMN	E-5	4			
	ACFT ELECTRICIAN	E-4	1			
	ACFT HYD RPMN	E-4	1	42		
	ACFT TURBINE ENG RPMN	E-4	5			
	ACFT PWR TN RPMN	E-4	2			
	ACFT RTR & PRP RMPN	E-4	4			
	AIRFRAME RPMN	E-4	6	43		
	AH-1G HELI RPMN	E-4	4	40		
	OH-6 HELI RPMN	E-4	4			
	REPAIR PARTS SP	E-4	3	40		
	UH-1 HEIL RPMN	E-4	4			
	ACFT ENG RPR APPR	E-3	2	01		
	AIRFRAME RPR APPR	E-3	3	01		
	ACFT MAINT APPR	E-3	5	01		
	ACFT RTR & PRP RPMN	E-3	1			
	GENERALR CLERK	E-3	1	01		
	LIGHT VEH DRIVER	E-3	1			
	PARA TOTAL		88			
17	REDEYE SEC HQ					
	REDEYE SEC LEADER	LT	1			
	SECTION SERGEANT	E-6	1	01		
	PARA TOTAL		2			
18	5 REDEYE TEAMS					
	TEAM CHIEF	E-5	5	11		
	REDEYE GUNNER	E-4	5	01		
	PARA TOTAL		10			
	SRC TOTAL		284			
	REMARKS					
01	ALSO LIGHT VEHICLE DRIVER					
07	ALSO INFORMATION NCO					
08	ALSO EDUCATION NCO					
10	ALSO TROOP CAREER COUNSELER					
11	ARMED WITH PISTOL AUTOMATIC CAL .45					
17	ARMED WITH REVOLVER CAL .38					
25	ALSO ASST S-4					
31	ALSO INFORMATION OFFICER					
35	ALSO TROOP AIRCRAFT MAINT OFF					
37	SUCCESSFUL COMPLETION OF SPECIAL WEAPONS TRAINING IS ESSENTIAL					
40	REMARK 01 APPLIES TO 1 EM					
41	ALSO COMMANDS COMMUNICATION PLATOON					
42	ALSO WRECKER OPERATOR					
43	1 EM OPERATES FORK LIFT					
44	ALSO COMMANDS MEDICAL PLATOON					
45	REMARK 01 APPLIES TO 2 EM					

PARA	DESCRIPTION	GRADE	STRENGTH	REMARKS		
				1	2	3
46	ALSO COMMANDS DS ACFT MAINT PLT					
47	QUALIFICATION AS ROTARY WING INSTRUMENT EXAMINER APPLIES TO 1 POSITION					
48	REMARK 01 APPLIES TO 5 EM					
49	3 FIRST COOKS E5 ASSIGNED TC TEAMS SUPPORTING TOE 17-206, 2 FIRST COOKS ARE ASSIGNED TO TEAMS SUPPORTING TOE 17-207 AND 17-208					
51	ALSO SPT PLT SGT					

EQUIPMENT ALLOWANCE		
PARA	DESCRIPTION	LEVEL
01	SQDN HEADQUARTERS	
	BAYONET-KNIFE W/SCABBARD FOR M16A1 RIFLE	11
	REVOLVER CALIBER .38 4 INCH BARREL	8
	RIFLE 5.56 MILLIMETER	3
02	TROOP HEADQUARTERS	
	BAYONET-KNIFE W/SCABBARD FOR M16A1 RIFLE	27
	LAUNCHER GRENADE 40 MILLIMETER SGLE SHOT RIFLE MTD DTCHBLE	2
	RADIO SET AN/VRC-46 MOUNTED IN TRUCK UTILITY 1¼ TON	1
	RADIO SET AN/VRC-47 MOUNTED IN TRUCK ¼ TON	1
	REVOLVER CALIBER .38, 4 INCH BARREL	2
	RIFLE 5.56 MILLIMETER	25
	TRAILER CARGO ¼ TON 2 WHEEL	1
	TRAILER CARGO 1½ TON 2 WHEEL	2
	TRUCK CARGO 1¼ TON 6 X 6	2
	TRUCK CARGO 2½ TON 6 X 6 W/WINCH	2
	TRUCK UTILITY ¼ TON 4 X 4	1
	TRUCK WRECKER 5 TON W/WINCH	1
03	SQDN HQ SECTION	
	BAYONET-KNIFE W/SCABBARD FOR M16A1 RIFLE	30
	LAUNCHER GRENADE 40 MILLIMETER SGLE SHOT RIFLE MTD DTCHBLE	9
	RADIO SET AN/GRC-106 MOUNTED IN TRUCK 1¼ TON CARGO	2
	RADIO SET AN/VRC-24 MOUNTED IN TRUCK 1¼ TON CARGO	1
	RADIO SET AN/VRC-46 MOUNTED IN TRUCK ¼ TON	6
	RADIO SET AN/VRC-46 MOUNTED IN TRUCK 1¼ TON CARGO	2
	RADIO SET AN/VRC-47 MOUNTED IN TRUCK ¼ TON	3
	RADIO SET AN/VRC-47 MOUNTED IN TRUCK 1¼ TON	2
	RADIO SET CONTROL GROUP AN/GRA-39	2
	RADIO SET CONTROL GROUP AN/GRA-74	
	REVOLVER CALIBER .38, 4 INCH BARREL	4
	RIFLE 5.56 MILIMETER	26
	TRAILER CARGO ¼ TON 2 WHEEL	4
	TRUCK CARGO 1¼ TON 6 X 6	4
	TRUCK UTILITY ¼ TON 4 X 4	10
04	SQDN COMM PLT HQ	
	BAYONET-KNIFE W/SCABBARD FOR M16A1 RIFLE	3
	RADIO SET AN/VRC-49 MOUNTED IN TRUCK ¼ TON	1
	RIFLE 5.56 MILLIMETER	3
	TRAILER CARGO ¼ TON 2 WHEEL	1
	TRUCK UTILITY ¼ TON 4 X 4	1
05	RADIO SECTION	
	BAYONET-KNIFE W/SCABBARD FOR M16A1 RIFLE	6
	RADIO TELETYPEWRITER SET AN/GRC-142	2
	RIFLE 5.56 MILLIMETER	6
	TRUCK CARGO ¾ TON 4 X 4	2
06	MSG CEN-WIRE SEC	
	BAYONET-KNIFE W/SCABBARD FOR M16A1 RIFLE	6
	LAUNCHER GRENADE 40 MILLIMETER SGLE SHOT RIFLE MTD DTCHBLE	2
	RIFLE 5.56 MILLIMETER	6

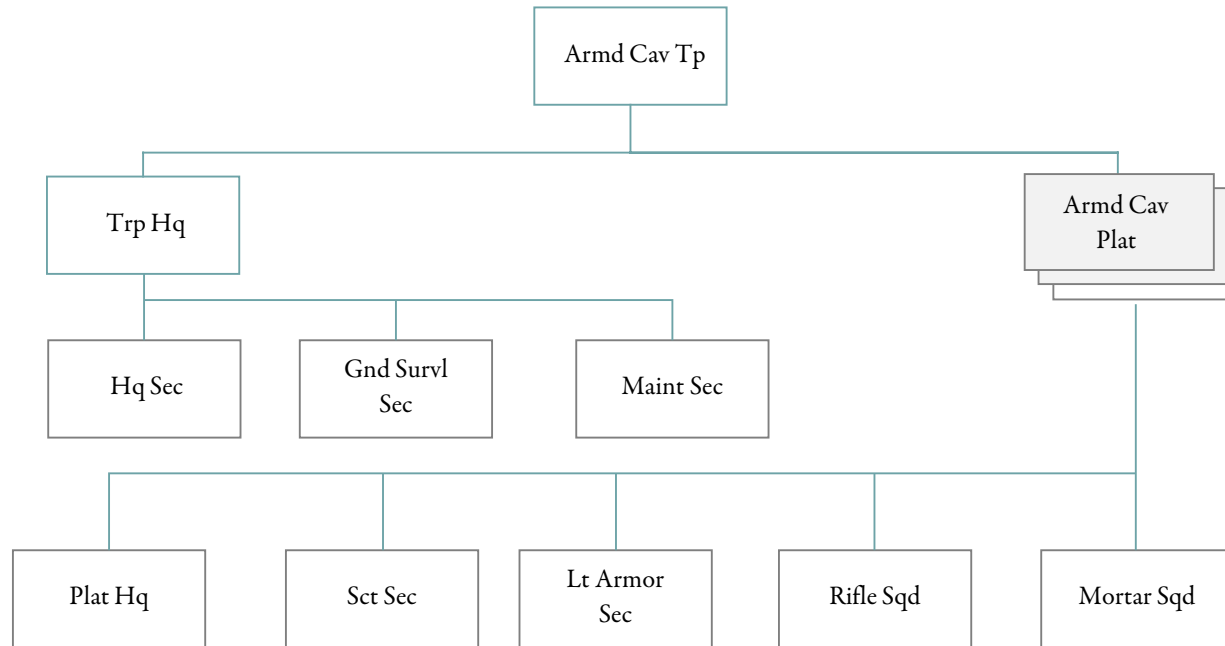
PARA	DESCRIPTION	LEVEL
	SWITCHBOARD TELEPHONE MANUAL SB-22/PT	2
	TELEPHONE SET TA-312/PT	12
	TRUCK CARGO 1¼ TON 6 X 6	1
07	SDQN SPT PLT HQ	
	BAYONET-KNIFE W/SCABBARD FOR M16A1 RIFLE	2
	LAUNCHER GRENADE 40 MILLIMETER SGLE SHOT RIFLE MTD DTCHBLE	1
	RADIO SET AN/VRC-47 MOUNTED IN TRUCK ¼ TON	1
	RIFLE 5.56 MILLIMETER	2
	TRUCK UTILITY ¼ TON 4 X 4	1
08	TRANSPORTATION SECTION	
	BAYONET-KNIFE W/SCABBARD FOR M16A1 RIFLE	14
	MACHINE GUN CALIBER .50 HB FLEXIBLE FOR GROUND USE	3
	MOUNT TRIPOD MACHINE GUN HEAVY CALIBER 50	3
	RIFLE 5.56 MILLIMETER	14
	TANK AND PUMP UNIT LIQUID DISPENSING TRUCKMOUNTING	3
	TANK UNIT LIQUID DISPENSING TRAILER MOUNTING	3
	TRAILER AMMUNITION 1½ TON 2 WHEEL	5
	TRAILER CARGO 1½ TON 2 WHEEL	3
	TRUCK CARGO 5 TON 6 X 6 LWB	6
	TRUCK CARGO 5 TON 6 X 6 LWB W/WINCH	2
	TRUCK LIFT FORK DSL DRVN 6000LB CAP ROUGH TERRAIN	1
09	SQDN SUPPLY SECTION	
	BAYONET-KNIFE W/SCABBARD FOR M16A1 RIFLE	7
	LAUNCHER GRENADE 40 MILLIMETER SGLE SHOT RIFLE MTD DTCHBLE	2
	MACHINE GUN 7.62 MILLIMETER LIGHT FLEXIBLE	2
	MOUNT TRIPOD MACHINE GUN 7.62 MILLIMETER	2
	RIFLE 5.56 MILLIMETER	7
	TRAILER CARGO 1½ TON 2 WHEEL	2
	TRUCK CARGO 5 TON 6 X 6 LWB	1
	TRUCK CARGO 5 TON 6 X 6 LWB W/WINCH	1
	5 TRP MESS TEAMS	
	BAYONET-KNIFE W/SCABBARD FOR M16A1 RIFLE	30
	LAUNCHER GRENADE 40 MILLIMETER SGLE SHOT RIFLE MTD DTCHBLE	5
	MACHINE GUN CALIBER .50 HB FLEXIBLER FOR GROUND USE	5
	RIFLE 5.56 MILLIMETER	30
	TRAILER TANK WATER 400 GALLON 1½ TON 2 WHEEL	5
	TRUCK CARGO 2½ TON 6 X 6 W/WINCH	5
11	SQDN MEDICAL SECTION	
	PISTOL CALIBER .45 AUTOMATIC	12
	RADIO SET AN/VRC-46 MOUNTED IN TRUCK ¾ TON CARGO	1
	RIFLE 5.56 MILLIMETER	10
	TRAILERCARGO ¾ TON 2 WHEEL	1
	TRUCK AMBULANCE 1¼ TON 6 X 6	2
	TRUCK CARGO ¾ TON 4 X 4 W/WINCH	1
12	AVIATION PLT HQ	
	BAYONET-KNIFE W/SCABBARD FOR M16A1 RIFLE	4
	LAUNCHER GRENADE 40 MILLIMETER SGLE SHOT RIFLE MTD DTCHBLE	1
	RADIO SET AN/VRC-47 MOUNTED IN TRUCK 1¼ TON	1
	REVOLVER CALIBER .38, 4 INCH BARREL	2

PARA	DESCRIPTION	LEVEL
	RIFLE 5.56 MILLIMETER	2
	TRUCK CARGO 1¼ TON 6 X 6	1
13	COMD AVN SEC	
	ARMAMENT SUBSYSTEM HELICOPTER 7.62 MILLIMETER MACHINE GUN LIGHT	4
	BAYONET-KNIFE W/SCABBARD FOR M16A1 RIFLE	8
	HELICOPTER UTILITY UH-1H	4
	RADIO SET AN/URC-10	4
	REVOLVER CALIBER .38, 4 INCH BARREL	8
14	AIRCRAFT MAINT SEC	
	BAYONET-KNIFE W/SCABBARD FOR M16A1 RIFLE	5
	LAUNCHER GRENADE 40 MILLIMETER SGLE SHOT RIFLE MTD DTCHBLE	3
	RIFLE 5.56 MILLIMETER	5
	TRAILER CARGO ¼ TON 2 WHEEL	1
	TRAILER CARGO 1½ TON 2 WHEEL	1
	TRUCK CARGO 2½ TON 6 X 6 W/WINCH	1
	TRUCK UTILITY ¼ TON 4 X 4	1
15	AVIATION SPT SEC	
	BAYONET-KNIFE W/SCABBARD FOR M16A1 RIFLE	8
	LAUNCHER GRENADE 40 MILLIMETER SGLE SHOT RIFLE MTD DTCHBLE	2
	RADIO SET AN/VRC-64 MOUNTED IN TRUCK FIRE FIGHT PUMP	1
	RIFLE 5.56 MILLIMETER	8
	TANK AND PUMP UNIT LIQUID DISPENSING TRUCK MOUNTING	1
	TANK UNIT LIQUID DISPENSING TRAILER MOUNTING	1
	TRAILER CARGO 1½ TON 2 WHEEL	2
	TRUCK CARGO 1¼ TON 6 X 6	1
	TRUCK CARGO 2½ TON 6 X 6	2
16	DS ARFT MAINT PLT	
	BAYONET-KNIFE W/SCABBARD FOR M16A1 RIFLE	88
	RADIO SET AN/VRC-46 MOUNTED IN TRUCK ¼ TON	1
	REVOLVER CALIBER .38, 4 INCH BARREL	6
	RIFLE 5.56 MILLIMETER	82
	TRAILER CARGO ¼ TON 2 WHEEL	1
	TRAILER CARGO 1½ TON 2 WHEEL	8
	TRANSPORTERS AIRMOBILE HYD LIFT FOR SHELTER AND X-4 CONTAINER	7
	TRUCK CARGO 1¼ TON 6 X 6	1
	TRUCK CARGO 2½ TON 6 X 6	8
	TRUCK LIFT FORK GAS PT 10000 LB ROUGH	1
	TRUCK TRACTOR WRECKER 5 TON 6 X 6 W/WINCH	1
	TRUCK UTILITY ¼ TON	1
	TRUCK VAN SHOP 2½ TON 6 X 6	1
17	REDEYE SEC HQ	
	BAYONET-KNIFE W/SCABBARD FOR M16A1 RIFLE	2
	RADIO SET AN/PRC-77	1
	RADIO SET AN/VRC-47 MOUNTED IN TRUCK ¼ TON	1
	RIFLE 5.56 MILLIMETER	2
	TRAILER CARGO ¼ TON 2 WHEEL	1
	TRUCK UTILITY ¼ TON 4 X 4	1
18	5 REDEYE TEAMS	
	BAYONET-KNIFE W/SCABBARD FOR M16A1 RIFLE	10

PARA	DESCRIPTION	LEVEL
	PISTOL CALIBER .45 AUTOMATIC	5
	RADIO SET AN/GRC-160 MTD IN TRUCK UTILITY ¼ TON	5
	RIFLE 5.56 MILLIMETER	5
	TRAILER CARGO ¼ TON 2 WHEEL	5
	TRUCK UTILITY ¼ TON 4 X 4	5

**ARMORED CAVALRY TOOP, AIR CAVALRY SQUADRON
INFANTRY DIVISION**

Designation: Troop ____, ____, Squadron (Air), ____, Cavalry



PERSONNEL ALLOWANCES

PARA	DESCRIPTION	GRADE	STRENGTH	REMARKS		
				1	2	3
01	HEADQUARTERS SECTION					
	TROOP COMMANDER	CPT	1	11		
	EXECUTIVE OFFICER	LT	1	28		
	FIRST SERGEANT	E-8	1	10		
	SUPPLY SERGEANT	E-6	1			
	COMM CHIEF	E-6	1			
	VEHICLE COMMANDER	E-6	1	11		
	TROOP CLERK	E-5	1	04		
	ARMORER	E-4	1	01		
	PER CARRIER DRIVER	E-4	2	11		
	SR RADIO OPERATOR	E-4	1	41		
	LT VEHICLE DRIVER	E-3	1	40		
	RADIO OPERATOR	E-3	1	01	41	
	SUPPLY CLERK	E-3	1	01		
	PARA TOTAL		14			
02	GROUND SURVL SECTION					
	SECTION LEADER	E-6	1			
	TEAM LEADER	E-5	1			
	SR RADAR OPERATOR	E-5	2			
	RADAR OPERATOR	E-4	2	01	41	
	PARA TOTAL		6			
03	MAINTENANCE SECTION					
	MOTOR SERGEANT	E-7	1			
	SR FLD RADIO MECHANIC	E-5	1			
	SR RECOVERY VEHICLE OP	E-5	1	11	16	
	SR TANK TURRET MECH	E-5	1			
	SR TRACK VEHICLE MECH	E-5	1			
	FIELD RADIO MECHANIC	E-4	2			
	TRACK VEHICLE MECH	E-4	6	44		
	RECOVERY VEHICLE OP	E-4	1	11	16	
	EQUIP MAINT CLERK	E-4	1			
	TANK TURRET MECHANIC	E-4	1			
	TRACK VEH MECH HLPR	E-3	2	01		
	PARA TOTAL		18			
04	3 ARMD CAV PLAT HQ					
	PLATOON LEADER	LT	3			
	SCOUT DRIVER	E-4	3			
	PARA TOTAL		6			
05	3 SCOUT SECTIONS					
	SECTION LEADER	E-6	3			
	SQUAD LEADER	E-6	3			
	ASST SQUAD LEADER	E-5	6			
	SCOUT DRIVER	E-4	12			
	SCOUT OBSERVER	E-3	12			
	PARA TOTAL		36			

PARA	DESCRIPTION	GRADE	STRENGTH	REMARKS		
				1	2	3
06	3 LT ARMOR SECTIONS					
	PLATOON SERGEANT	E-7	3	11	45	48
	AR/AAV COMMANDER	E-6	6	11	48	
	GUNNER	E-5	9	11	48	
	AR/AAV DRIVER	E-5	9	11	16	48
	LOADER	E-3	9	11	16	48
	PARA TOTAL		36			
07	3 RIFLE SQUADS					
	SQUAD LEADER	E-6	3			
	TEAM LEADER	E-5	6			
	AUTO RIFLEMAN	E-4	6			
	GRENADIER	E-4	6			
	PER CARRIER DRIVER	E-4	3			
	RIFLEMAN	E-3	9			
	PARA TOTAL		33			
08	3 MORTAR SQUADS					
	SQUAD LEADER	E-5	3			
	MORTAR GUNNER	E-4	3	11		
	A MORTAR GUNNER	E-3	3			
	AMMUNITION BEARER	E-3	3			
	LT VEHICLE DRIVER	E-3	3			
	PARA TOTAL		15			
	SRC TOTAL		144			
	REMARKS					
01	ALSO LIGHT VEHICLE DRIVER					
04	ALSO SWITCHBOARD OPERATOR					
11	ARMED WITH PISTOL AUTOMATIC CAL .45					
16	ARMED WITH SUBMACHINE GUN CAL .45					
28	ALSO MOTOR OFFICER					
40	ALSO WIREMAN					
41	ALSO CRPTOGRAPHIC EQUIPMENT OPERATOR					
44	1 EM DRIVES CARRIER PERSONNEL FULL TRACKED					
45	ALSO AR/AAV COMMANDER					
48	MUST HAVE COMPLETED TRANSITIONAL TRAINING ON THE SHILLELAGH WEAPONS SYSTEM					

EQUIPMENT ALLOWANCE		
PARA	DESCRIPTION	LEVEL
01	HEADQUARTERS SECTION	
	BAYONET-KNIFE W/SCABBARD FOR M16A1 RIFLE	14
	CARRIER COMMAND AND RECONNAISSANCE ARMORED	1
	CARRIER PERSONNEL FULL TRACKED ARMORED	1
	LAUNCHER GRENADE M203 FOR XM16E1 RIFLE	1
	MACHINE GUN CALIBER .50 HB FOR GROUND USE	1
	MOUNT TRIPOD MACHINE GUN HEAVY CALIBER 50	1
	NIGHT VISION SIGHT CREW SERVED WEAPONS AN/TVS-2	2
	NIGHT VISION SIGHT INDIVIDUAL SERVEP WEAPONS AN/PVS-2	2
	PISTOL CALIBER .45 AUTOMATIC	4
	RADIO SET AN/GRC-106 MOUNTED IN CARRIER PERSONNEL FTA	1
	RADIO SET AN/VRS-12	1
	RADIO SET AN/VRC-47 MOUNTED IN CARRIER PERSONNEL FTA	1
	RADIO SET AN/VRC-47 MOUNTED IN TRUCK ¼ TON	1
	RADIO SET CONTROL GROUP AN/GRA-39	1
	RIFLE 5.56 MILLIMETER	10
	SWITCHBOARD TELEPHONE MANUAL SB-22/PT	1
	TELEPHONE SET TA-312/PT	3
	TRAILER CARGO 1½ TON 2 WHEEL	1
	TRUCK CARGO 2½ TON 6 X 6	1
	TRUCK UTILITY ¼ TON 4 X 4	1
02	GROUND SURVL SECTION	
	BAYONET-KNIFE W/SCABBARD FOR M16A1 RIFLE	6
	CARRIER PERSONNEL FULL TRACKED ARMORED	2
	LAUNCHER GRENADE M203 FOR XM16A1 RIFLE	2
	NIGHT VISION SIGHT CREW SERVED WEAPONS AN/TVS-2	2
	RADAR SET AB/PPS-5	2
	RADIO SET AN/GRC-160 MTD IN CARRIER PERSONNEL FTA	2
	RIFLE 5.56 MILLIMETER	6
03	MAINTENANCE SECTION	
	BAYONET-KNIFE W/SCABBARD FOR M16A1 RIFLE	18
	CARRIER PERSONNEL FULL TRACKED ARMORED	1
	LAUNCHER GRENADE M203 FOR XM16A1 RIFLE	1
	NIGHT VISION SIGHT CREW SERVED WEAPONS AN/TVS-2	2
	PISTOL CALIBER .45 AUTOMATIC	2
	RADIO SET AN/VRC-46 MOUNTED IN RECOVERY VEH FT LIGHT ARMORED	1
	RADIO SET AN/VRC-47 MOUNTED IN TRUCK¼ TON	1
	RADIO SET AN/VRC-64 MOUNTED IN CARRIER PERSONNEL FTA	1
	RECOVERY VEHICLE FULL TRACKED LIGHT ARMOR	1
	RIFLE 5.56 MILLIMETER	16
	SUBMACHINE GUN CAL .45	2
	TRAILER CARGO ¼ TON 2 WHEEL	1
	TRAILER CARGO 1½ TON 2 WHEEL	1
	TRUCK CARGO 2½ TON 6 X 6	1
	TRUCK UTILITY ¼ TON 4 X 4	1
04	3 ARMD CAV PLAT HQ	
	BAYONET-KNIFE W/SCABBARD FOR M16A1 RIFLE	6
	CARRIER COMMAND AND RECONNAISSANCE ARMORED	3

PARA	DESCRIPTION	LEVEL
	NIGHT VISION SIGHT CREW SERVED WEAPONS AN/TVS-2	3
	NIGHT VISION SIGHT TRIPOD MOUNTED AN/TVS-4	3
	RADIO SET AN/VRC-12 MOUNTED IN CARRIER COMMAND AND RECONNAISSANCE FTA	3
	RADIO SET CONTROL GROUP AN/GRA-39	3
	RIFLE 5.56 MILLIMETER	6
05	3 SCOUT SECTIONS	
	BAYONET-KNIFE W/SCABBARD FOR M16A1 RIFLE	36
	CARRIER COMMAND AND RECONNAISSANCE ARMORED	12
	LAUNCHER GRENADE M203 FOR XM16E1	12
	NIGHT VISION SIGHT CREW SERVED WEAPONS AN/TVS-2	12
	NIGHT VISION SIGHT INDIVIDUAL SERVEP WEAPON AN/PVS-2	12
	RADIO SET AN/GRC-160 MTD IN CARRIER COMMAND AND RECONNAISSANCE	6
	RADIO SET AN/VRC-46 MOUNTED IN CARRIER RECONNAISSANCE FTA	6
	RIFLE 5.56 MILLIMETER	36
06	3 LT ARMOR SECTIONS	
	ARMORED RECONNAISSANCE AIRBORNE ASSAULT VEHICLE	9
	BAYONET-KNIFE W/SCABBARD FOR M16A1 RIFLE	36
	LAUNCHER GRENADE M203 FOR XM16E1 RIFLE	9
	NIGHT VISION SIGHT INDIVIDUAL SERVEP WEAPON AN/PVS-2	9
	PISTOL CALIBER .45 AUTOMATIC	36
	RADIO SET AN/VRC-12 MOUNTED IN ARMD RECON ABN ASSAULT VEHICLE	3
	RADIO SET AN/VRC-64 MOUNTED IN ARMD RECON ABN ASSAULT VEHICLE	6
	RIFLE 5.56 MILLIMETER	9
	SUBMACHINE GUN CALIBER .45	18
09	3 RIFLE SQUADS	
	BAYONET-KNIFE W/SCABBARD FOR M16A1 RIFLE	33
	CARRIER PERSONNEL FULL TRACKED ARMORED	3
	DEMOLITION SET EXPLOSIVE INITIATING NON ELECTRICAL	3
	LAUNCHER GRENADE M203 FOR XM16E1 RIFLE	6
	MACHINE GUN 7.62 MILLIMETER LIGHT FLEXIBLE	3
	MOUNT TRIPOD MACHINE GUN 7.62 MILLIMETER	3
	NIGHT VISION SIGHT INDIVIDUAL SERVEP WEAPON AN/PVS-2	6
	RADIO SET AN/PRC-77	3
	RADIO SET AN/VRC-64 MOUNTED IN CARRIER PERSONNEL FTA	3
	RIFLE 5.56 MILLIMETER	33
	BIPOD RIFLE 5.56 MILLIMETER W/CARRYING CASE FOR M16A1 RIFLE	6
09	3 MORTAR SQUADS	
	BAYONET-KNIFE W/SCABBARD FOR M16A1 RIFLE	15
	CARRIER 107 MIILIMETE MORTAR SELF PROPELLED (LESS MORTAR)	3
	MORTAR 4.2 INCH ON MOUNT	3
	NIGHT VISION SIGHT CREW SERVED WEAPONS AN/TVS-2	3
	PISTOL CALIBER .45 AUTOMATIC	3
	RADIO SET AN/GRC-160 MTD IN CARRIER 107MM MORTAR SP	3
	RIFLE 5.56 MILLIMETER	12

PERSONNEL ALLOWANCES

PARA	DESCRIPTION	GRADE	STRENGTH	REMARKS		
				1	2	3
01	TROOP HEADQUARTERS					
	TROOP COMMANDER	MAJ	1	17		
	HELICOPTER PILOT	WO	1	17		
	FIRST SERGEANT	E-8	1	10		
	UH-1 CREW CHIEF	E-5	1	17		
	TROOP CLERK	E-5	1	01	41	
	PARA TOTAL		5			
02	FLIGHT OPERATIONS SEC					
	FLIGHT OP OFFICER	CPT	1	17	32	
	OPNS SGT	E-7	1			
	COMM CHIEF	E-5	1			
	FLIGHT OPERATIONS SP	E-4	1			
	SR RADIO OPERATOR	E-4	1	01	04	
	RADIO OPERATOR	E-3	1	01	04	
	PARA TOTAL		6			
03	AERO SCOUT PLAT HQ					
	PLATOON COMMANDER	CPT	1	17		
	PLATOON SERGEANT	E-7	1	17	61	
	OH-58 CREW CHIEF	E-5	1	14	17	
	PARA TOTAL		3			
04	2 AERO SCOUT SECS					
	SECTION COMMANDER	LT	2	17		
	TEAM LEADER	LT	2	17		
	HELICOPTER PILOT	WO	5	17		
	OH-58 CREW CHIEF	E-5	9	14	17	61
	PARA TOTAL		18			
05	AERO RIFLE PLATOON HQ					
	PLATOON COMMANDER	CPT	1	17		
	HELICOPTER PILOT	WO	10	17		
	PLATOON SERGEANT	E-7	1			
	UH-1 CREW CHIEF	E-5	5	17		
	PARA TOTAL		17			
06	4 AERO RIFLE SQUADS					
	SQUAD LEADER	E-6	4			
	TEAM LEADER	E-5	8			
	AUTO RIFLEMAN	E-4	8	13		
	GRENADIER	E-4	8			
	RIFLEMAN	E-3	12			
	PARA TOTAL		40			
07	AERO WEAPONS PLAT HQ					
	PLATOON COMMANDER	CPT	1	17		
	HELICOPTER PILOT	WO	1	17		
	PLATOON SERGEANT	E-7	1			
	AH-1G CREW CHIEF	E-5	1			
	PARA TOTAL		4			
	2 AERO WEAPONS SECS					

PARA	DESCRIPTION	GRADE	STRENGTH	REMARKS		
				1	2	3
	SECTION COMMANDER	LT	2	17		
	TEAM LEADER	LT	2	17		
	HELICOPTER PILOT	WO	12	17	43	
	AH-1G CREW CHIEF	E-5	8			
	PARA TOTAL		24			
09	SERVICE PLATOON HQ					
	PLATOON COMMANDER	CPT	1	17		
10	MAINTENANCE SECTION					
	SECTION CHIEF	WO	1	17		
	HELICOPTER PILOT	WO	1	17		
	ACFT ARMAMENT SUPV	E-7	1			
	MAINT SUPV	E-7	1			
	MOTOR SERGEANT	E-6	1			
	TECHNICAL INSP	E-6	3	17		
	ACFT REP PARTS SP	E-5	1			
	SR ACFT ARMAMENT MECH	E-5	6			
	SR AH-1G HCPTR PRMN	E-5	2			
	SR AVIONICS MECHANIC	E-5	2			
	SR UH-1 HELI RPMN	E-5	2			
	UH-1 CREW CHIEF	E-5	1	17		
	ACFT REP PARTS SP	E-4	3			
	AH-1G HELI RPMN	E-4	3			
	AIRCRAFT ARMT MECH	E-4	8			
	AVIONICS MECHANIC	E-4	3			
	FIELD RADIO MECH	E-4	1	01		
	GP POWER GEN OP/MECH	E-4	1			
	UH-1 HELI RPMN	E-4	2			
	WHEEL VEH MECH	E-4	2	01		
	EQUIP RECORDS CLERK	E-4	1			
	ACFT MAINTENANCE APPR	E-3	2	01		
	PWR GEN EQUIP APPR	E-3	1	01		
	WHEEL VEH MECH HLPR	E-3	1	01		
	PARA TOTAL		50			
11	SUPPLY SECTION					
	SECTION CHIEF	WO	1	17		
	HELICOPTER PILOT	WO	1	17		
	SUPPLY SERGEANT	E-6	1			
	AFLD SER SUPV	E-5	1			
	UH-1 CREW CHIEF	E-5	1	17		
	ACFT FUELS HAND SP	E-4	4	01		
	AMMO SPECIALIST	E-4	2	01		
	ARMORER	E-4	1			
	A FLD SER CRMN	E-3	2	01		
	SUPPLY CLERK	E-3	1	01		
	PARA TOTAL		15			
	SRC TOTAL		183			
	REMARKS					
01	ALSO LIGHT VEHICLE DRIVER					

PARA	DESCRIPTION	GRADE	STRENGTH	REMARKS		
				1	2	3
04	ALSO SWITCHBOARD OPERATOR					
10	ALSO CAREER COUNSELLER					
13	ARMED WITH RIFLE 5.56MM WITH BIPOD					
14	ALSO ARMED WITH RIFLE 5.56MM					
17	ARMED WITH REVOLVER CALIBER .38, 4-INCH BARREL					
32	ALSO EXECUTIVE OFFICER					
40	REMARK 01 APPLIES TO 1 EM					
41	ALSO RADIO TELEPHONE OPERATOR					
43	QUALIFICATION AS ROTARY WING INSTRUMENT EXAMINER APPLIES TO 2 POSITIONS					
61	ALSO AERIEAL OBSERVER					

EQUIPMENT ALLOWANCE			
PARA	DESCRIPTION	LEVEL	
01	TROOP HEADQUARTERS		
	ARMAMENT SUBSYSTEM HELICOPTER 7.62 MILLIMETER MACHINE GUN LIGHT	1	
	BAYONET-KNIFE W/SCABBARD FOR M16A1 RIFLE	1	
	HELICOPTER UTILITY UH-1H	1	
	LAUNCHER GRENADE 40 MILLIMETER SGLE SHOT RIFLE MTD DTCHBLE	1	
	RADIO SET AN/URC-10	1	
	RADIO SET AN/VRC-47 MOUNTED IN TRUCK ¼ TON	1	
	REVOLVER CALIBER .38 4 INCH BARREL	3	
	RIFLE 5.56 MILLIMETER	2	
	TRAILER CARGO ¼ TON 2 WHEEL	1	
	TRUCK UTILITY ¼ TON	1	
02	FLIGHT OPERATIONS SEC		
	BAYONET-KNIFE W/SCABBARD FOR M16A1 RIFLE	6	
	RADIO SET AN/GRC-106 MTD IN TRUCK 1¼ TON CARGO	1	
	RADIO SET AN/VRC-47 MOUNTED IN TRUCK ¼ TON	1	
	RADIO SET AN/VRC-47 MOUNTED IN TRUCK 1¼ TON	1	
	RADIO SET CONTROL GROUP AN/GRA-74	1	
	REVOLVER CALIBER .38 4 INCH BARREL	1	
	RIFLE 5.56 MILLIMETER	5	
	SWITCHBOARD TELEPHONE MANUAL SB-22/PT	1	
	TELEPHONE SET TA-312/PT	8	
	TRAILER CARGO ¼ TON 2 WHEEL	1	
03	TRUCK CARGO 1¼ TON 6 X 6	1	
	TRUCK UTILITY ¼ TON 4 X 4	1	
	AERO SCOUT PLAT HQ		
	BAYONET-KNIFE W/SCABBARD FOR M16A1 RIFLE	3	
	HELICOPTER OBSERVATION OH-58A	1	
	LAUNCHER GRENADE 40 MILLIMETER SGLE SHOT RIFLE MTD DTCHBLE	1	
	MACHINE GUN 7.62 MILLIMETER LIGHT FLEXIBLE	1	
	RADIO SET AN/PRC-77	1	
	RADIO SET AN/URC-10	1	
	REVOLVER CALIBER .38 4 INCH BARREL	3	
	RIFLE 5.56 MILLIMETER	1	
04	2 AERO SCOUT SECS		
	BAYONET-KNIFE W/SCABBARD FOR M16A1 RIFLE	18	
	HELICOPTER OBSERVATION OH-58A	9	
	LAUNCHER GRENADE 40 MILLIMETER SGLE SHOT RIFLE MTD DTCHBLE	9	
	MACHINE GUN 7.62 MILLIMETER LIGHT FLEXIBLE	9	
	RADIO SET AN/PRC-77	2	
	RADIO SET AN/URC-10	9	
	REVOLVER CALIBER .38 4 INCH BARREL	18	
	RIFLE 5.56 MILLIMETER	9	
	05	AERO RIFLE PLATOON HQ	
		ARMAMENT SUBSYSTEM HELICOPTER 7.62 MILLIMETER MACHINE GUN LIGHT	5
BAYONET-KNIFE W/SCABBARD FOR M16A1 RIFLE		17	
HELICOPTER UTILITY UH-1H		5	
RADIO SET AN/PRC-77		5	
RADIO SET AN/URC-10	5		

PARA	DESCRIPTION	LEVEL
	REVOLVER CALIBER .38 4 INCH BARREL	16
	RIFLE 5.56 MILLIMETER	1
06	4 AERO RIFLE SQUADS	
	BAYONET-KNIFE W/SCABBARD FOR M16A1 RIFLE	40
	LAUNCHER GRENADE 40 MILLIMETER SGLE SHOT RIFLE MTD DTCHBLE	8
	MACHINE GUN 7.62 MILLIMETER LIGHT FLEXIBLE	4
	MOUNT TRIPOD MACHINE GUN 7.62 MILLIMETER	4
	NIGHT VISION SIGHT INDIVIDUAL SERVEP WEAPONS AN/PVS-2	8
	RIFLE 5.56 MILLIMETER	40
	BIPOD RIFLE 5.56 MILLIMETER W/CARRYING CASE F/M16A1 RIFLE	8
07	AERO WEAPONS PLAT HQ	
	ARMAMENT SUBSYS HE 7.62MM MG - 40MM GRENADE LNCHR HIGH RATE	1
	BAYONET-KNIFE W/SCABBARD FOR M16A1 RIFLE	4
	HELICOPTRE ATTACK AH-1G	1
	LAUNCHER ROCKET AIRCRAFT 2.75 INCH 19 TUBE (REPAIRABLE)	4
	RADIO SET AN/PRC-77	1
	RADIO SET AN/URC-10	1
	REVOLVER CALIBER .38 4 INCH BARREL	2
	RIFLE 5.56 MILLIMETER	2
08	2 AERO WEAPONS SECS	
	ARMAMENT SUBSYSTEM HELICOPTER 20MM AUTOMATIC GUN	4
	ARMAMENT SUBSYS HEL 7.62MM MG - 40MM GRENADE LNCHR HIGH RATE	8
	BAYONET-KNIFE W/SCABBARD FOR M16A1 RIFLE	24
	HELICOPTER ATTACK AH-1G	8
	LAUNCHER ROCKET AIRCRAFT 2.75 INCH	12
	LAUNCHER ROCKET AIRCRAFT 2.75 INCH 9 TUBE (REPAIRABLE)	16
	MACHINE GUN 7.62 MILLIMETER SIX BARRELS	3
	RADIO SET AN/URC-10	8
	REVOLVER CALIBER .38 4 INCH BARREL	16
	RIFLE 5.56 MILLIMETER	8
09	SERVICE PLATOON HQ	
	BAYONET-KNIFE W/SCABBARD FOR M16A1 RIFLE	1
	REVOLVER CALIBER .38 4 INCH BARREL	1
10	MAINTENANCE SECTION	
	ARMAMENT SUBSYSTEM HELICOPTER 7.62 MILLIMETER MACHINE GUN LIGHT	1
	BAYONET-KNIFE W/SCABBARD FOR M16A1 RIFLE	50
	HELICOPTER UTILITY UH-1H	1
	MACHINE GUN CALIBER .50 HB FLEXIBLE FOR GROUND USE	2
	MOUNT TRIPOD MACHINE GUN HEAVY CALIBER 50	2
	RADIO SET AN/URC-10	1
	RADIO SET AN/VRC-47 MOUNTED IN TRUCK ¼ TON	1
	REVOLVER CALIBER .38 4 INCH BARREL	6
	RIFLE 5.56 MILLIMETER	44
	TRAILER CARGO ¼ TON 2 WHEEL	1
	TRAILER CARGO 1½ TON 2 WHEEL	3
	TRANSPORTER AIRMOBILE HYD LIFT FOR SHELTER AND X-4 CONTAINER	1
	TRUCK CARGO 1¼ TON 6 X 6	2
	TRUCK CARGO 2½ TON 6 X 6	1
	TRUCK CARGO 2½ TON 6 X 6 W/WINCH	1

PARA	DESCRIPTION	LEVEL
11	TRUCK UTILITY ¼ TON 4 X 4	1
	TRUCK VAN SHOP 2½ TON 6 X 6	1
	SUPPLY SECTION	
	ARMAMENT SUBSYSTEM HELICOPTER 7.62 MILLIMETER MACHINE GUN LIGHT	1
	BAYONET-KNIFE W/SCABBARD FOR M-16A1 RIFLE	15
	HELICOPTER UTILITY UH-1H	1
	MACHINE GUN CALIBER .50 HB FLEXIBLE FOR GROUND USE	5
	MOUNT TRIPOD MACHINE GUN HEAVY CALIBER 50	5
	RADIO SET AN/PRC-41	2
	RADIO SET AN/URC-10	1
	REVOLVER CALIBER .38 4 INCH BARREL	3
	RIFLE 5.56 MILLIMETER	12
	TRAILER AMMUNITION 1½ TON 2 WHEEL	2
	TRAILER CARGO 1½ TON 2 WHEEL	3
	TRUCK CARGO 2½ TON 6 X 6	2
	TRUCK CARGO 2½ TON 6 X 6 W/WINCH	1
	TRUCK CARGO 5 TON 6 X 6 LWB	1
	TRUCK CARGO 5 TON 6 X 6 LWB W/WINCH	1
	TRUCK LIFT FORK DSL DRVN 6000 LB CAP ROUGH TERRAIN	2
	TRUCK TANK FUEL SERVICING 2½ TON 6 X 6	2
TRUCK TANK FUEL SERVICING 2½ TON 6 X 6 W/WINCH	2	